

2014 HSC Industrial Technology Graphics Technologies Marking Guidelines

Section I

Multiple-choice Answer Key

Question	Answer
1	D
2	C
3	B
4	B
5	B
6	D
7	D
8	A
9	C
10	C

Section II

Question 11

Criteria	Marks
<ul style="list-style-type: none">Identifies an appropriate display method	1

Sample answer:

Laminate the plans.
Place into an A4 sleeve and display.
Display in a folder with plastic sleeves.

Question 12

Criteria	Marks
<ul style="list-style-type: none">Correlates software and presentation application	3
<ul style="list-style-type: none">Lists a software and presentation method	2
<ul style="list-style-type: none">Lists an appropriate software package	1

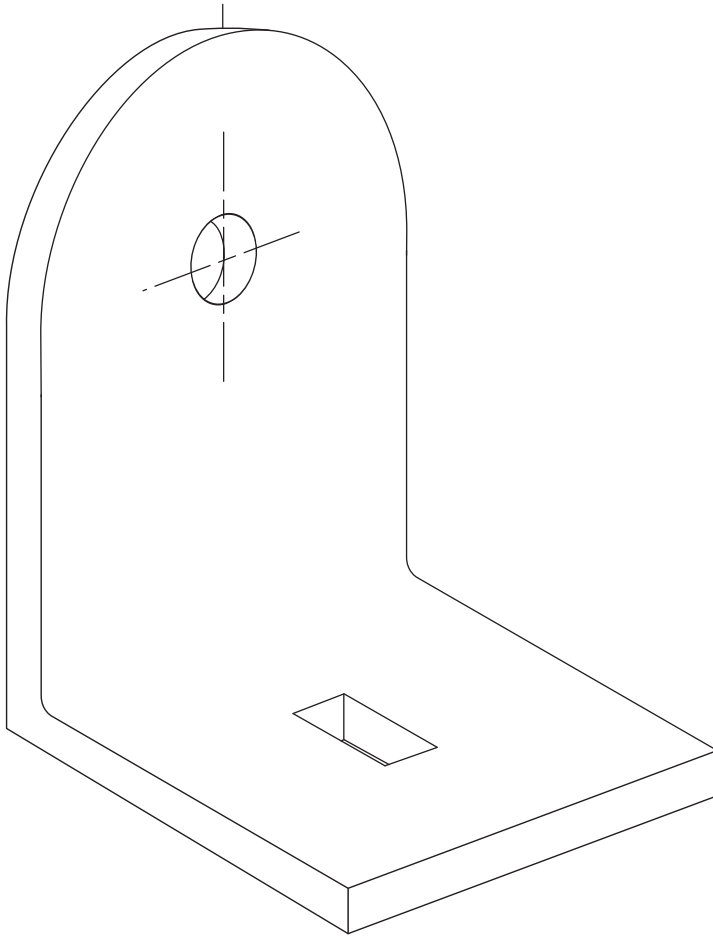
Sample answer:

Clear projection with a data projector using presentation software like PowerPoint or Prezi allows all the audience to see the graphics. Graphics are imported into the presentation from other software.

Question 13

Criteria	Marks
• Accurately completes isometric drawing	3
• Mostly completes isometric drawing	2
• Some correct detail of isometric drawing	1

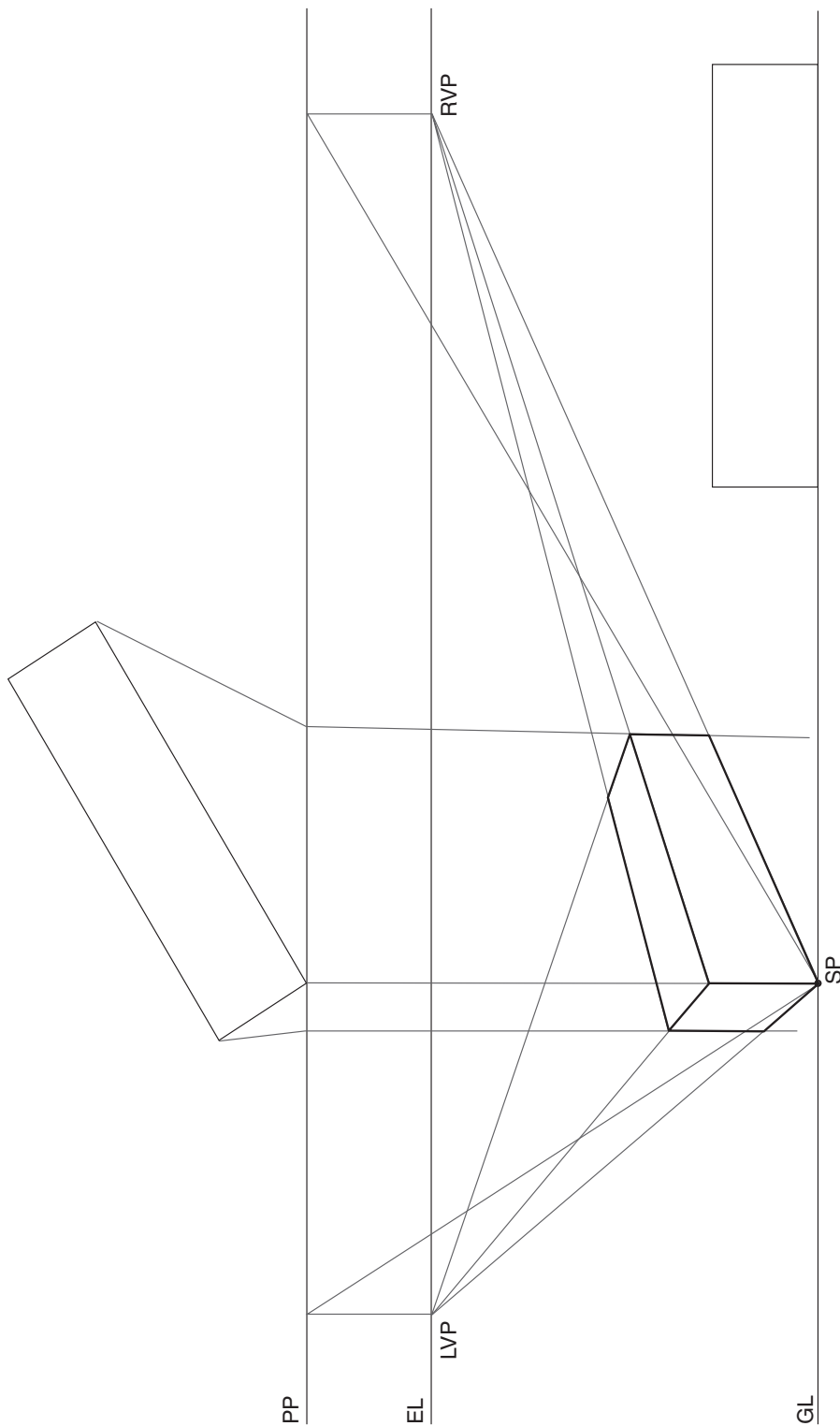
Sample answer:



Question 14

Criteria	Marks
• Accurately completes a perspective drawing	3
• Completes a mostly accurate perspective drawing	2
• Produces an incomplete perspective drawing with limited accuracy	1

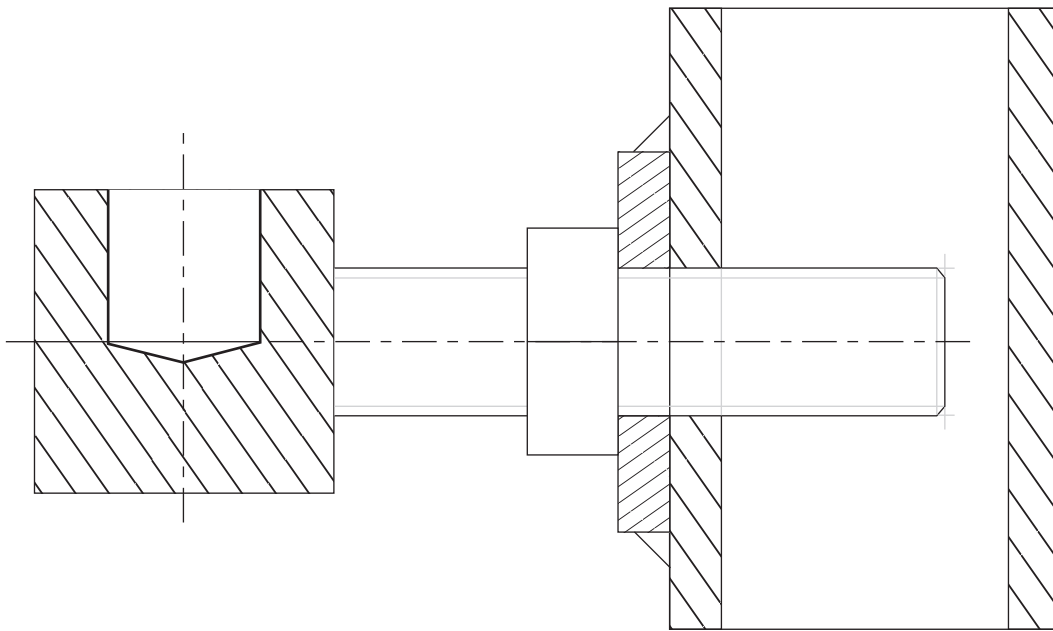
Sample answer:



Question 15

Criteria	Marks
• Accurately sketches with weld symbol, thread detail and hatching	5
• General detail using a sketch and standards	3–4
• Some detail in a sketch	2
• Some evidence of a sketch	1

Sample answer:



Section III**Question 16 (a)**

Criteria	Marks
• Detailed understanding of the characteristics and features of how government legislation has impacted work practices	6
• Sound understanding of the characteristics and features of how government legislation has impacted work practices	4–5
• Basic understanding of features of government legislation and link to work practices	2–3
• Provides some relevant information	1

Sample answer:

Government legislation, such as the Equal Employment Opportunity Act, has had significant impacts on work practices. For example, when advertising, interviewing, and appointing someone to a position in an organisation care and diligence is required to ensure everybody has an opportunity to apply, get interviewed and appointed, regardless of gender, disability, race, beliefs etc. This may mean equal access now requires ramps, elevators, disabled toilets in all workplaces.

Question 16 (b)

Criteria	Marks
• Provides a judgement based on detailed criteria of the effect of new and emerging technologies on work practices	9
• Provides a judgement based on criteria of the effect of new and emerging techniques on work practices	7–8
• Provides an understanding of the value and effect of new and emerging technologies on work practices	5–6
• Main features of the value or effect of new and emerging technologies on work practices	3–4
• Provides some relevant information	1–2

Answers could include:

The internet has now allowed people to do some of their work from home as they can access the company's software and data from home.

This is very positive for three main reasons:

1. Travel time is reduced. This means the worker can spend more time with his/her family which has positive effects for the happiness of the worker.
2. Fewer people travelling on roads to and from work means less traffic. Less traffic means faster travelling and less frustration before getting to work.
3. More work can be done as working alone at home means no distractions from other workers.

Industrial Technology Graphics Technologies

2014 HSC Examination Mapping Grid

Section I

Question	Marks	Content	Syllabus outcomes
1	1	Processes, Symbols	H3.1
2	1	Processes, Drawing types	H3.1
3	1	Processes, Councils	H1.1
4	1	Principles and Standards	H1.2
5	1	Processes	H1.3
6	1	Principles and Standards	H1.2
7	1	Processes	H3.2
8	1	Processes	H3.2
9	1	Processes	H1.2
10	1	Personnel	H3.2

Section II

Question	Marks	Content	Syllabus outcomes
11	1	Equipment	H1.2
12	3	Processes, Equipment	H1.2
13	3	Processes	H3.1, H5.1
14	3	Processes	H3.1, H5.1
15	5	Processes	H3.1, H4.3, H6.2

Section III

Question	Marks	Content	Syllabus outcomes
16 (a)	6	Personnel Issues	H1.1, H2.1
16 (b)	9	Technological Considerations	H1.1, H2.1, H7.2