

**B O A R D O F S T U D I E S**  
NEW SOUTH WALES

**2009**

**HIGHER SCHOOL CERTIFICATE  
EXAMINATION**

# Physics

## General Instructions

- Reading time – 5 minutes
- Working time – 3 hours
- Write using black or blue pen
- Draw diagrams using pencil
- Board-approved calculators may be used
- A data sheet, formulae sheets and Periodic Table are provided at the back of this paper
- Write your Centre Number and Student Number at the top of pages 9, 11, 13, 15, 19 and 21

**Total marks – 100**

**Section I** Pages 2–22

**75 marks**

This section has two parts, Part A and Part B

Part A – 15 marks

- Attempt Questions 1–15
- Allow about 30 minutes for this part

Part B – 60 marks

- Attempt Questions 16–27
- Allow about 1 hour and 45 minutes for this part

**Section II** Pages 23–33

**25 marks**

- Attempt ONE question from Questions 28–32
- Allow about 45 minutes for this section

**Section I**  
**75 marks**

**Part A – 15 marks**

**Attempt Questions 1–15**

**Allow about 30 minutes for this part**

Use the multiple-choice answer sheet for Questions 1–15.

---

- 1** A fast-moving space probe passes close to a planet.

During its journey, how does the gravitational field of the planet affect the speed and direction of the probe?

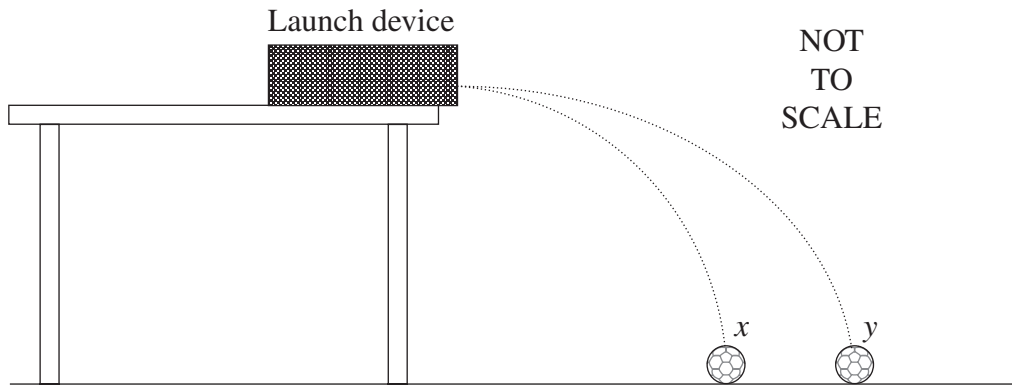
	<i>Speed</i>	<i>Direction</i>
(A)	Remains constant	Remains constant
(B)	Remains constant	Changes
(C)	Changes	Changes
(D)	Changes	Remains constant

- 2** A satellite is moving in a circular orbit of radius  $7.0 \times 10^6$  m around Earth.

If the speed of the satellite is  $8.1 \times 10^3$  m s<sup>-1</sup>, what is its centripetal acceleration?

- (A) 9.4 m s<sup>-2</sup>  
(B) 9.8 m s<sup>-2</sup>  
(C)  $5.6 \times 10^{25}$  m s<sup>-2</sup>  
(D)  $3.9 \times 10^{32}$  m s<sup>-2</sup>
- 3** A satellite is moved from a geostationary orbit to a higher orbit.
- Which statement about the orbit change is correct?
- (A) During the move the gravitational potential energy decreases.  
(B) The change in gravitational potential energy is independent of the mass of the satellite.  
(C) The work done is the difference between the gravitational potential energy of the higher orbit and that of the geostationary orbit.  
(D) The work done is the energy required to move the satellite, which is in the gravitational field, from a very large distance away, to the higher orbit.

- 4 A device launches two identical balls ( $x$  and  $y$ ) simultaneously in a horizontal direction from the same height. The results are shown.



Which statement correctly describes what happens?

- (A)  $x$  hits the ground before  $y$  as it is closer to the launch site.
  - (B)  $y$  hits the ground before  $x$  as it has a higher launch velocity.
  - (C)  $x$  and  $y$  hit the ground simultaneously with the same velocity.
  - (D)  $x$  and  $y$  hit the ground simultaneously with different velocities.
- 5 During a lunar eclipse, Earth moves between the Sun and the Moon.

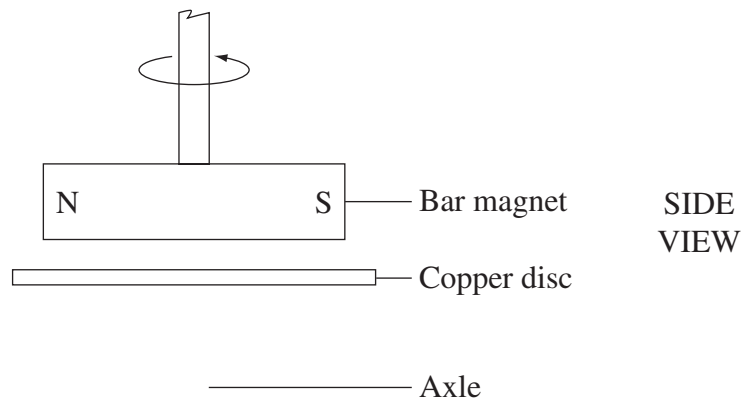


What happens to the force exerted by the Sun on the Moon?

- (A) It increases.
- (B) It decreases.
- (C) It remains unchanged.
- (D) It depends on the closeness of Earth to the Moon.

- 6 Which of the following would increase the output of a simple DC generator?
- (A) Increasing the rotation speed of the rotor
  - (B) Reducing the number of windings in the coil
  - (C) Using slip rings instead of a split ring commutator
  - (D) Wrapping the windings around a laminated, aluminium core

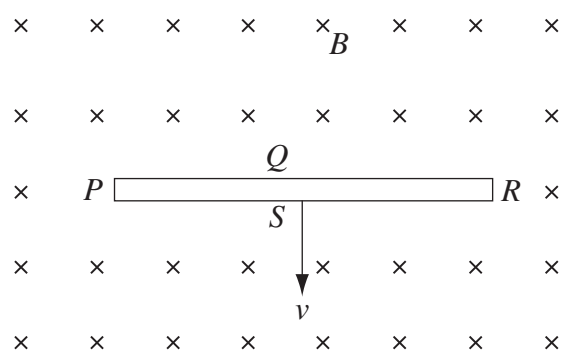
- 7 A type of car speedometer consists of a rotating bar magnet which produces eddy currents in a copper disc. A model of this is shown.



As the magnet begins to rotate, in which direction does the disc move?

- (A) Toward the magnet
  - (B) Away from the magnet
  - (C) Rotates in the same direction as the magnet
  - (D) Rotates in the opposite direction to the magnet
- 8 What is an essential requirement for the operation of a step-down transformer?
- (A) A laminated iron core
  - (B) A non-conducting core
  - (C) A magnetic interaction between the primary and secondary coils
  - (D) An electrical connection between the primary and secondary coils

- 9 A thin solid conductor with sides  $PQRS$  is moving at constant velocity  $v$ , at right angles to a uniform magnetic field  $B$ , directed into the page as shown.

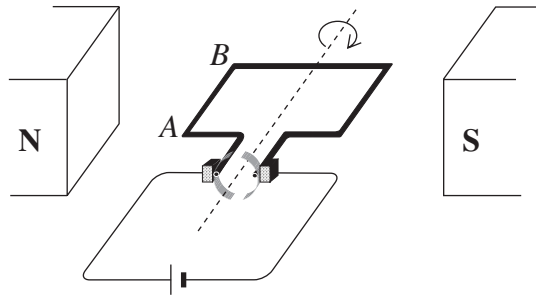


Which side of the conductor has the greatest concentration of electrons?

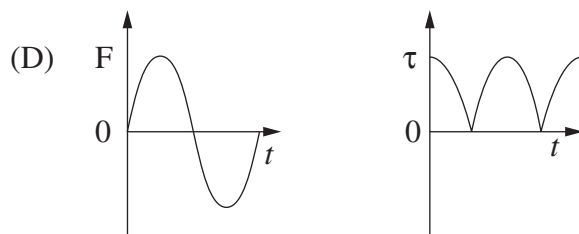
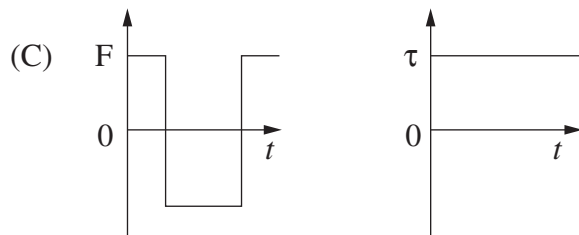
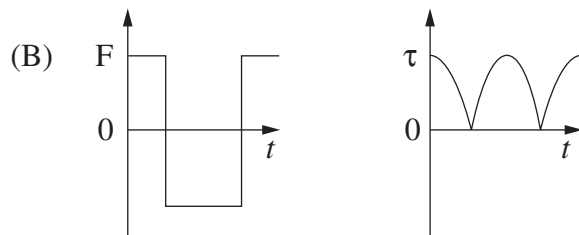
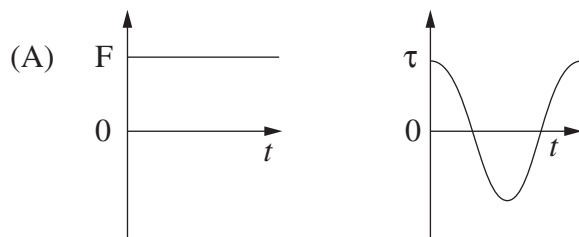
- (A)  $P$   
 (B)  $Q$   
 (C)  $R$   
 (D)  $S$
- 10 Which option best identifies why germanium was replaced by silicon in the semiconductor industry?

	<i>Germanium</i>	<i>Silicon</i>
(A)	Remains a useful semiconductor at higher temperatures	Less abundant
(B)	Less abundant	Remains a useful semiconductor at higher temperatures
(C)	Remains a useful semiconductor at higher temperatures	More abundant
(D)	More abundant	Remains a useful semiconductor at higher temperatures

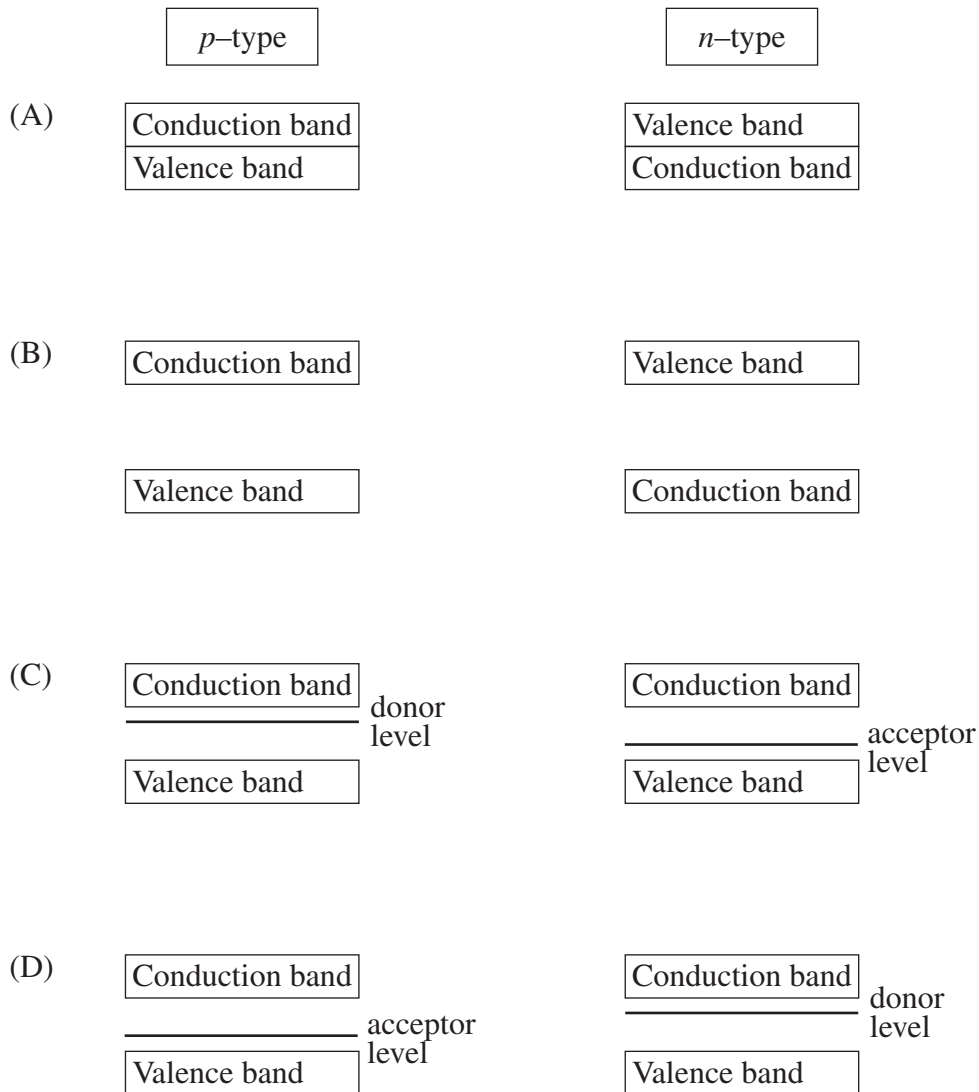
- 11 The diagram shows a DC motor with a constant current flowing to the rotor.



Which pair of graphs best describes the behaviour of the force  $F$  on wire  $AB$ , and the torque  $\tau$  on the rotor as functions of time  $t$ ?



12 Which of the following diagrams best represents the energy bands in  $p$ -type and  $n$ -type semiconductors?



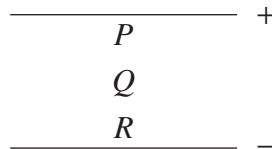
13 Why does superconductivity occur in certain materials at low temperatures?

- (A) At low temperatures there are no lattice vibrations.
- (B) Some pairs of electrons experience net attraction at low temperatures.
- (C) The materials are alloys and alloys lose all resistance at low temperatures.
- (D) At low temperatures the materials become magnetic and this reduces the scattering of electron pairs.

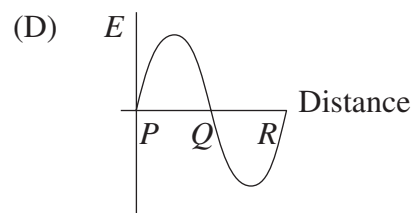
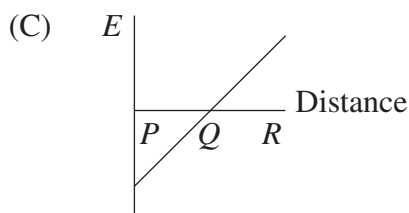
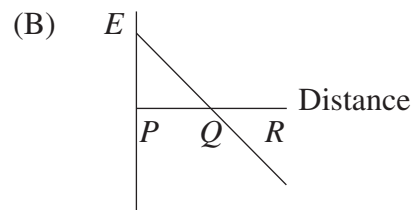
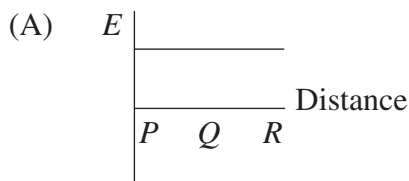
- 14 Blue light is found to cause photoelectric emission from a sodium surface but not from a platinum surface.

Which of the following best accounts for this difference?

- (A) Platinum does not absorb photons.  
 (B) Platinum has more electrons than sodium.  
 (C) More energy is needed to remove an electron from a platinum surface.  
 (D) The intensity of the blue light is not high enough to remove electrons from the platinum surface.
- 15 The diagram shows two parallel plates with opposite charges.  $P$ ,  $Q$  and  $R$  represent distances from the positive plate.



Which of the following graphs describes the electric field strength,  $E$ , between the plates?



--	--	--	--	--

Centre Number

Section I (continued)

--	--	--	--	--	--	--	--	--

Student Number

Part B – 60 marks

Attempt Questions 16–27

Allow about 1 hour and 45 minutes for this part

Answer the questions in the spaces provided.

Show all relevant working in questions involving calculations.

Question 16 (3 marks)

NASA recently landed a space probe on an asteroid found between the orbits of Earth and Mars. The 500 kg space probe had a weight of 2.5 N when it landed on the asteroid.

- (a) What would be the weight of this space probe on the surface of Earth? 1

.....

.....

- (b) Before landing on the asteroid, the space probe was placed in an orbit with radius 50 km. The orbital period was  $5.9 \times 10^4$  s. 2

What was the mass of the asteroid?

.....

.....

.....

**Question 17 (5 marks)**

- (a) Using labelled diagrams, show how a first-hand investigation could be performed to distinguish between an inertial and a non-inertial frame of reference. **2**

- (b) Explain how inertial and non-inertial frames of reference relate to the principle of relativity. **3**

.....

.....

.....

.....

.....

.....

.....

.....

.....

.....

--	--	--	--	--

Centre Number

Section I – Part B (continued)

--	--	--	--	--	--	--	--	--

Student Number

**Question 18** (4 marks)

The nearest galaxy to ours is the Large Magellanic Cloud, with its centre located  $1.70 \times 10^5$  light years from Earth. Assume you are in a spacecraft travelling at a speed of  $0.99999c$  toward the Large Magellanic Cloud.

- (a) In your frame of reference, what is the distance between Earth and the Large Magellanic Cloud? **2**

.....

.....

.....

.....

- (b) In your frame of reference, how long will it take you to travel from Earth to the Large Magellanic Cloud? **2**

.....

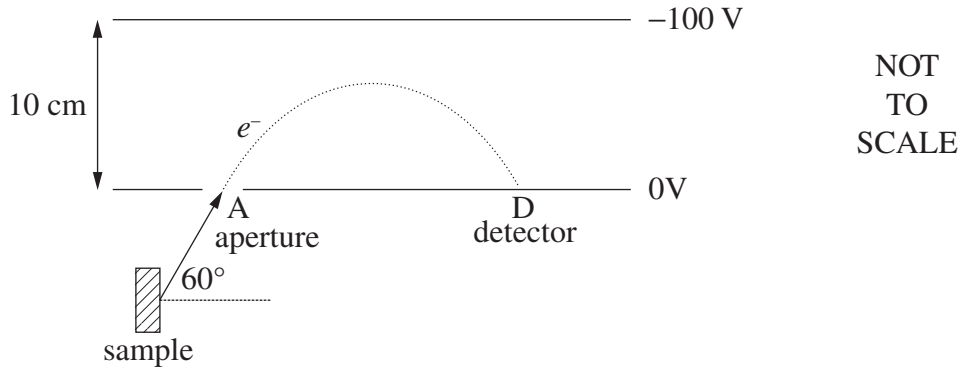
.....

.....

.....

**Question 19** (6 marks)

An electron is emitted from a mineral sample, and travels through aperture A into a spectrometer at an angle of  $60^\circ$  with a speed of  $6.0 \times 10^6 \text{ m s}^{-1}$ .



- (a) Calculate the magnitude and direction of the force experienced by the electron inside the spectrometer. **3**

.....

.....

.....

.....

.....

.....

- (b) The electron experiences constant acceleration and eventually strikes the detector, D. **3**

What is the time taken for the electron to travel from A to D?

.....

.....

.....

.....

.....

.....

--	--	--	--	--

Centre Number

Section I – Part B (continued)

--	--	--	--	--	--	--	--	--

Student Number

---

**Question 20** (4 marks)

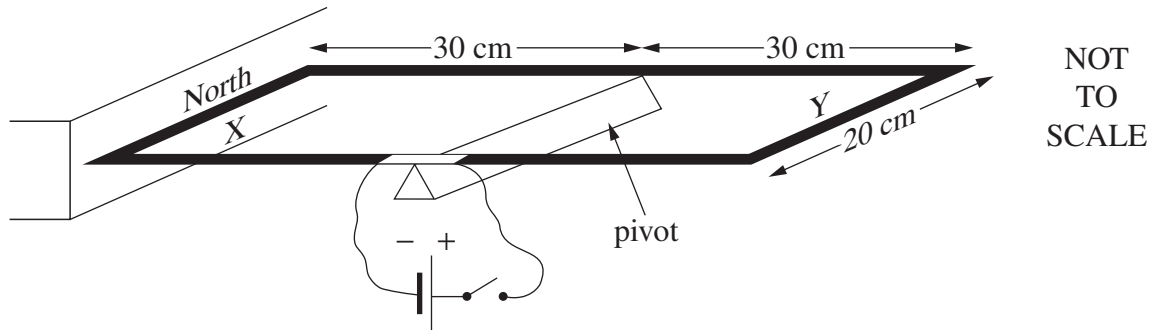
Draw a table to summarise the energy transformations and transfers for three household appliances. Each appliance must have a different type of useful energy output. Include the name of the appliance, its use and the transformation/transfer of energy involved.

**4**

--

**Question 21** (6 marks)

A rectangular wire loop is connected to a DC power supply. Side X of the loop is placed next to a magnet. The loop is free to rotate about a pivot.



When the power is switched on, a current of 20 A is supplied to the loop. To prevent rotation, a mass of 40 g can be attached to either side X or side Y of the loop.

- (a) On which side of the loop should the mass be attached to prevent rotation? **1**

.....

- (b) Calculate the torque provided by the 40 g mass. **2**

.....  
 .....  
 .....

- (c) Calculate the magnetic field strength around side X. **3**

.....  
 .....  
 .....

--	--	--	--	--

Centre Number

Section I – Part B (continued)

--	--	--	--	--	--	--	--	--

Student Number

**Question 22** (4 marks)

How did the invention of the transistor transform the way communication occurs in Australia? In your answer, refer to the technology that the transistor replaced. **4**

.....

.....

.....

.....

.....

.....

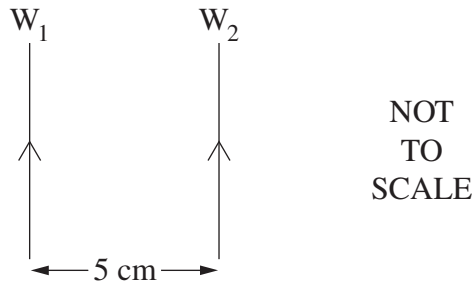
.....

.....

.....

**Question 23** (6 marks)

Two identical wires,  $W_1$  and  $W_2$ , each 2.5 m in length, are positioned as shown. They carry identical currents in the direction indicated.



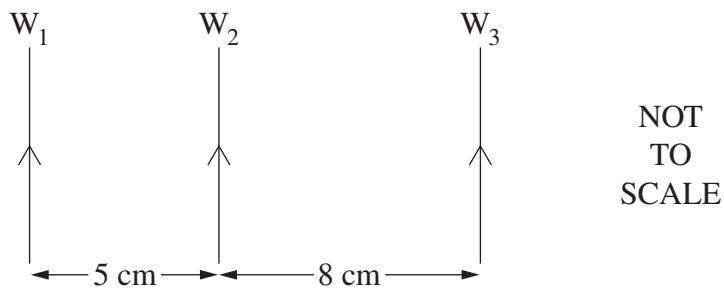
- (a) Identify the direction of the force which  $W_2$  experiences as a result of the current in  $W_1$ . **1**

.....

- (b) Calculate the current in each wire, given that the two wires experience a force of  $6.9 \times 10^{-4}$  N. **2**

.....  
 .....  
 .....  
 .....

- (c) A third wire,  $W_3$ , carrying a smaller current, is now placed as shown. **3**

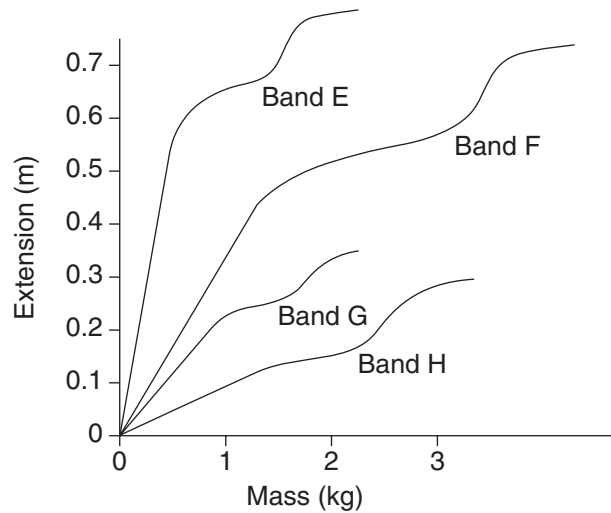


Explain qualitatively the forces on  $W_2$  as a result of the currents in  $W_1$  and  $W_3$ .

.....  
 .....  
 .....  
 .....  
 .....  
 .....

**Question 24** (4 marks)

An experiment was conducted to investigate the flexibility\* and strength\*\* of different types of rubber bands, all with the same initial length. A mass was attached to each band and the extension was measured. Masses were gradually increased, and the extensions measured until each band broke. The photograph was taken during the experiment. The results are summarised in the graph.



\* Flexibility: *The more flexible the rubber band, the greater its extension for a given mass.*  
\*\* Strength: *The stronger the rubber band, the more mass it is able to hold before breaking*

- (a) Which rubber band is the most flexible? Justify your answer with reference to the graph. **2**

.....  
.....

- (b) Identify the strongest rubber band and state the mass range in which the extension appears to be directly proportional to the attached mass. **2**

.....  
.....

BLANK PAGE

--	--	--	--	--

Centre Number

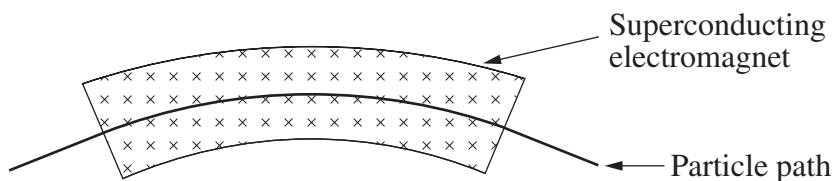
Section I – Part B (continued)

--	--	--	--	--	--	--	--	--

Student Number

Question 25 (5 marks)

In the Large Hadron Collider (LHC), the particle beams are steered using magnetic fields, as shown.



- (a) Two particles with the same mass and speed are travelling through the LHC in opposite directions. 2

What can be deduced about the charge on the particles?

.....  
.....

- (b) During a test run, a proton travels with a speed of  $1.0 \times 10^7 \text{ m s}^{-1}$  around the LHC. The radius of curvature of its path is 4.2 m. 3

Calculate the magnetic field strength.

.....  
.....  
.....  
.....  
.....  
.....



--	--	--	--	--

Centre Number

Section I – Part B (continued)

--	--	--	--	--	--	--	--	--

Student Number

**Question 27** (7 marks)

In an experiment to investigate the photoelectric effect, light is shone onto a silver surface and the resulting maximum electron kinetic energy is measured and recorded.

<i>Light wavelength (nm)</i>	<i>Electron kinetic energy (eV)</i>
250	0.25
215	1.08
187	1.90
167	2.73
150	3.56

- (a) Determine the frequency of the highest energy photons used in the experiment. **2**

.....

.....

.....

.....

- (b) What effect would changing the intensity of the light have on the measured electron kinetic energy? **1**

.....

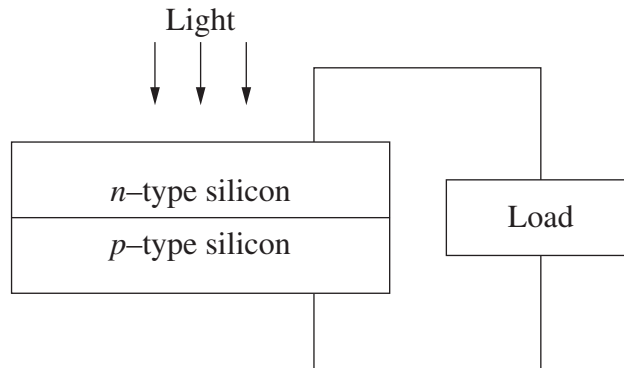
.....

**Question 27 continues on page 22**

Question 27 (continued)

- (c) With reference to the photoelectric effect, and the semiconductors shown in the diagram, explain the operation of a solar cell.

4



.....

.....

.....

.....

.....

.....

.....

.....

.....

.....

.....

.....

.....

.....

.....

.....

**End of Question 27**

# Physics

## Section II

**25 marks**

**Attempt ONE question from Questions 28–32**

**Allow about 45 minutes for this section**

Answer the question in a writing booklet. Extra writing booklets are available.

Show all relevant working in questions involving calculations.

---

	Pages
Question 28    Geophysics .....	24–25
Question 29    Medical Physics .....	26–27
Question 30    Astrophysics .....	28–29
Question 31    From Quanta to Quarks .....	30–31
Question 32    The Age of Silicon .....	32–33

**Question 28 — Geophysics (25 marks)**

- (a) Radiation is used to obtain information about a surface from a distance.
- (i) Use a labelled diagram and text to outline a first-hand investigation to demonstrate the relationship between the nature of a surface and the radiation reflected. **2**
  - (ii) How would the results demonstrate the relationship between the nature of the surface and the radiation reflected? **2**
  - (iii) Use a specific example to show how radiation can be used to provide information about Earth from a distance. **2**

- (b) A pendulum was used to determine the acceleration due to gravity,  $g$ , at the base of a mountain. The period,  $T$ , was 2.00 s, and the length of the string,  $l$ , was 1.00 m.

- (i) Calculate  $g$ , using the formula, **2**

$$T = 2\pi\sqrt{\frac{l}{g}}.$$

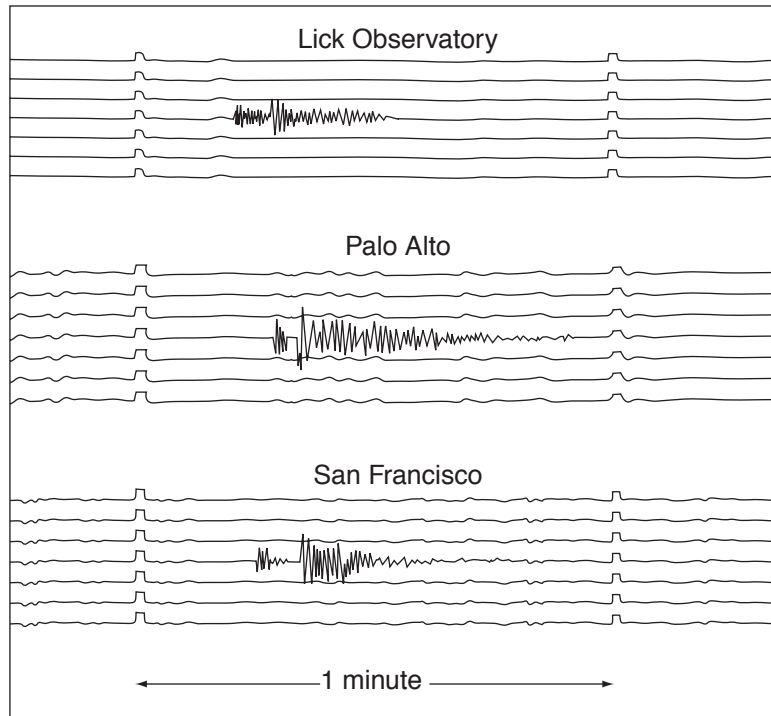
- (ii) Calculate the radius of Earth using this value of  $g$ . **2**
- (iii) The pendulum was moved to a different location where there are no mountains. The same value of  $T$  was obtained. **3**

Explain this observation.

**Question 28 continues on page 25**

Question 28 (continued)

- (c) Seismograms from three different geophysical stations showing the records of a small earthquake somewhere in California are shown. Time is marked on each seismogram by offsets in the records. The interval between the offsets is 1 minute.



© Department of Earth and Environmental Sciences

- (i) Explain the features of the graphs and what information can be deduced. **3**
- (ii) Describe how seismic methods are used in the search for oil and gas. **3**
- (d) Name THREE geophysical techniques, and explain how each of these provides evidence to support the claim that Earth is dynamic. **6**

**End of Question 28**

**Question 29 — Medical Physics (25 marks)**

- (a) (i) In X-ray images, the small intestine is not normally visible. **2**  
Explain how the use of a contrast medium, for example a barium meal, allows the small intestine to be seen.
- (ii) Using text and a labelled diagram, explain how X-rays are produced for medical imaging. **4**
- (b) (i) Given the velocity of sound in blood is  $1.53 \times 10^3 \text{ m s}^{-1}$ , and blood has a density of  $1.05 \times 10^3 \text{ kg m}^{-3}$ , calculate the acoustic impedance of blood. **1**
- (ii) Ultrasound can pass from blood into a variety of materials. What happens to the incident pulse when it passes into materials of increasing acoustic impedance? **1**
- (iii) Explain how a piezoelectric crystal can be used as a producer and receiver of ultrasound waves. **4**

**Question 29 continues on page 27**

Question 29 (continued)

- (c) (i) “Have a CAT scan – live longer!” **4**

Can the claim made in this statement be justified? In your answer refer to the properties and uses of CAT scans.

- (ii) In this PET image a chemical tracer has been used to measure glucose metabolism in a patient. **3**



Explain how this image has been produced, including the physics involved.

- (d) Describe the sequence of events and associated processes of physics by which an image is produced using magnetic resonance imaging. **6**

**End of Question 29**

**Question 30 — Astrophysics (25 marks)**

(a) (i) Distinguish between the terms *resolution* and *sensitivity* as used in astrophysics. **2**

(ii) Interferometry and active optics are techniques that can be used to improve the resolution and/or sensitivity of ground based telescopes. **4**

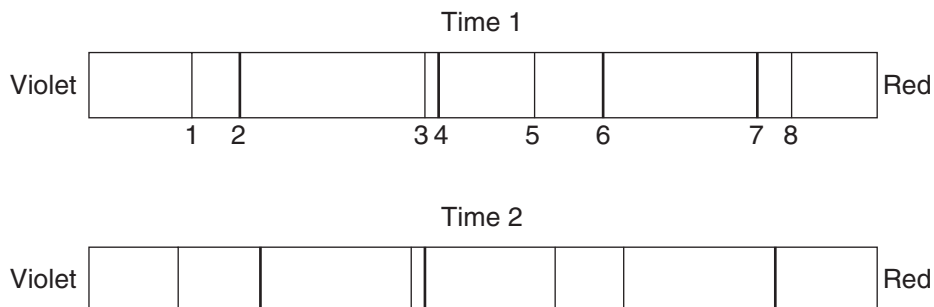
Explain why only one of these techniques is useful in improving the resolution and sensitivity of radio telescopes.

(b) (i) Describe the modelling process used in a computer simulation which draws a light curve for an eclipsing binary star system. **2**

(ii) Two stars in a visual binary system have an orbital period of  $2.1 \times 10^8$  s and are determined to be  $7.2 \times 10^8$  km apart. **2**

Calculate the combined mass of the stars.

(iii) The spectra below show absorption lines for a variable pair of spectroscopic binary stars at two different times, Time 1 and Time 2. Each spectrum contains the absorption lines from both stars. **3**



Explain why there are differences in the spectra.

**Question 30 continues on page 29**

Question 30 (continued)

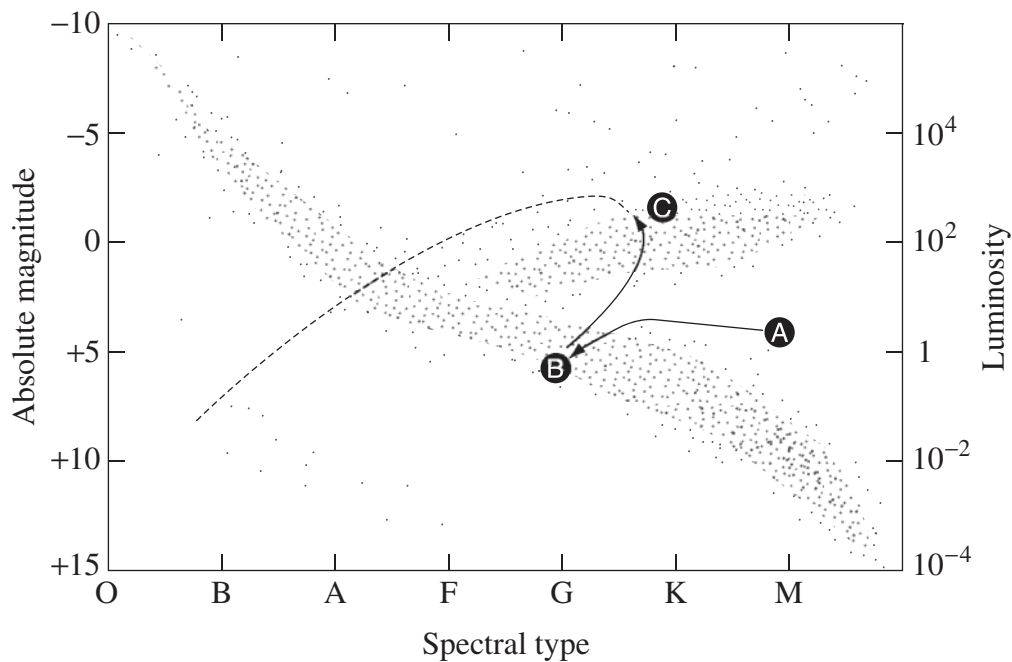
- (c) (i) A star was found to have a visual magnitude (V) of 2.9 and a photographic magnitude (B) of 4.6. 1

Will the star be more blue or more red in colour?

- (ii) How can the colour index (B–V) of a star be measured in an observatory? 2

- (d) Describe the advantages of using photoelectric technologies over photographic methods in photometry. 3

- (e) A possible evolutionary path of a star is shown on the Hertzsprung-Russell (H-R) diagram. 6



Describe the sequence of events and the associated physical processes a star undergoes in moving from **A** to **B** to **C**.

**End of Question 30**

**Question 31 — From Quanta to Quarks (25 marks)**

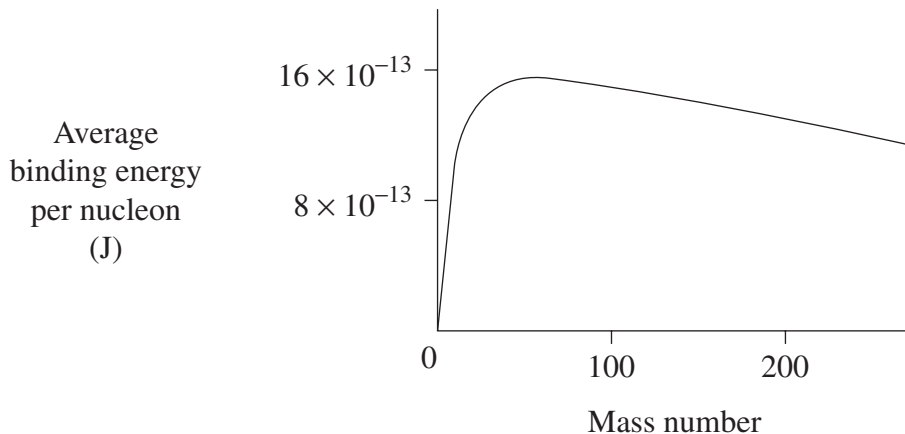
- (a) Marsden and Geiger conducted an experiment in which they fired alpha particles at a thin gold foil. Most of the particles passed straight through.
- (i) Describe how Rutherford's model of the atom explained these results. **2**
  - (ii) Describe TWO problems associated with Rutherford's model and how these were explained by Bohr's model of the hydrogen atom. **4**
- (b)
- (i) Describe de Broglie's proposal that a particle can exhibit both wave and particle properties. **2**
  - (ii) Explain how Davisson and Germer were able to confirm de Broglie's proposal. **3**
  - (iii) Calculate the velocity of an electron that has a wavelength of  $3.33 \times 10^{-10}$  m. **2**

**Question 31 continues on page 31**

Question 31 (continued)

- (c) (i) Define *mass defect*. **1**
- (ii) The energy required to separate all the nucleons within a nucleus is the binding energy. The average binding energy per nucleon is a measure of the stability of a nucleus. **2**

The graph shows how average binding energy per nucleon varies with mass number.



Use the graph to compare the stability of a nucleus of mass number 200 with a nucleus of mass number 50.

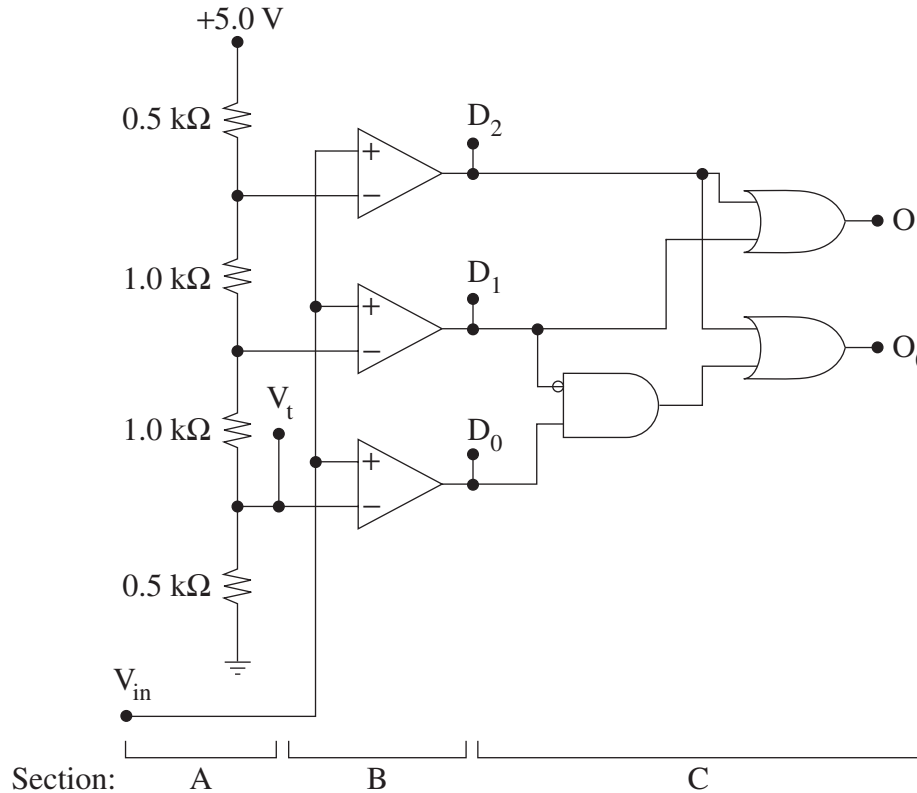
- (d) In 1920, Rutherford suggested the existence of an undiscovered nuclear particle. Explain how Chadwick confirmed Rutherford's prediction using conservation laws. **3**
- (e) Theories and experiments not only help increase our understanding but also generate new questions. **6**

Use the standard model of matter to support this statement.

**End of Question 31**

**Question 32 — The Age of Silicon (25 marks)**

- (a) The following circuit diagram shows the internal design of a 2-bit analogue to digital converter.



- |       |  |          |
|-------|--|----------|
| (i)   | Identify the function of section A of the circuit.   | <b>1</b> |
| (ii)  | Calculate the voltage $V_t$ .  | <b>1</b> |
| (iii) | Are the amplifiers in section B used in an open loop or closed loop configuration? Justify your answer.                        | <b>2</b> |
| (iv)  | Construct a truth table showing the outputs $O_1$ and $O_0$ for each of the possible input states of $D_0$ , $D_1$ and $D_2$ . | <b>2</b> |

**Question 32 continues on page 33**

Question 32 (continued)

- (b) (i) Compare the function of input and output transducers. 2
- (ii) An electronic system monitors conditions in a glasshouse. The system measures sunlight intensity, temperature, and controls an electric watering pump. 5

Copy this table into your writing booklet and complete the table for this system.

	<i>Sunlight</i>	<i>Temperature</i>	<i>Pump</i>
Type of transducer			
Input or output transducer			
Outline of operation	<b>TABLE TO BE COMPLETED IN YOUR WRITING BOOKLET</b>		

- (c) Outline the differences between digital and analogue signals using the operation of a music CD player as an example. 2
- (d) Analyse how the development of the integrated circuit has affected energy consumption. 4
- (e) The advancement of silicon-based integrated circuit technology has resulted in progressive miniaturisation and a doubling of circuit performance roughly every 18 months. It is expected that physics limitations will soon halt this progress, requiring a reconceptualisation of the way integrated circuits are constructed. 6

If this reconceptualisation cannot be realised, what would be the likely impact on society?

**End of paper**

BLANK PAGE

## DATA SHEET

Charge on electron, $q_e$	$-1.602 \times 10^{-19} \text{ C}$
Mass of electron, $m_e$	$9.109 \times 10^{-31} \text{ kg}$
Mass of neutron, $m_n$	$1.675 \times 10^{-27} \text{ kg}$
Mass of proton, $m_p$	$1.673 \times 10^{-27} \text{ kg}$
Speed of sound in air	$340 \text{ m s}^{-1}$
Earth's gravitational acceleration, $g$	$9.8 \text{ m s}^{-2}$
Speed of light, $c$	$3.00 \times 10^8 \text{ m s}^{-1}$
Magnetic force constant, $\left( k \equiv \frac{\mu_0}{2\pi} \right)$	$2.0 \times 10^{-7} \text{ N A}^{-2}$
Universal gravitational constant, $G$	$6.67 \times 10^{-11} \text{ N m}^2 \text{ kg}^{-2}$
Mass of Earth	$6.0 \times 10^{24} \text{ kg}$
Planck constant, $h$	$6.626 \times 10^{-34} \text{ J s}$
Rydberg constant, $R$ (hydrogen)	$1.097 \times 10^7 \text{ m}^{-1}$
Atomic mass unit, $u$	$1.661 \times 10^{-27} \text{ kg}$ $931.5 \text{ MeV}/c^2$
1 eV	$1.602 \times 10^{-19} \text{ J}$
Density of water, $\rho$	$1.00 \times 10^3 \text{ kg m}^{-3}$
Specific heat capacity of water	$4.18 \times 10^3 \text{ J kg}^{-1} \text{ K}^{-1}$

## FORMULAE SHEET

$$v = f\lambda$$

$$I \propto \frac{1}{d^2}$$

$$\frac{v_1}{v_2} = \frac{\sin i}{\sin r}$$

---


$$E = \frac{F}{q}$$

$$R = \frac{V}{I}$$

$$P = VI$$

$$\text{Energy} = VIt$$


---

$$v_{\text{av}} = \frac{\Delta r}{\Delta t}$$

$$a_{\text{av}} = \frac{\Delta v}{\Delta t} \text{ therefore } a_{\text{av}} = \frac{v - u}{t}$$

$$\Sigma F = ma$$

$$F = \frac{mv^2}{r}$$

$$E_k = \frac{1}{2}mv^2$$

$$W = Fs$$

$$p = mv$$

$$\text{Impulse} = Ft$$


---

$$E_p = -G \frac{m_1 m_2}{r}$$

$$F = mg$$

$$v_x^2 = u_x^2$$

$$v = u + at$$

$$v_y^2 = u_y^2 + 2a_y \Delta y$$

$$\Delta x = u_x t$$

$$\Delta y = u_y t + \frac{1}{2} a_y t^2$$

$$\frac{r^3}{T^2} = \frac{GM}{4\pi^2}$$

$$F = \frac{Gm_1 m_2}{d^2}$$

$$E = mc^2$$

$$l_v = l_0 \sqrt{1 - \frac{v^2}{c^2}}$$

$$t_v = \frac{t_0}{\sqrt{1 - \frac{v^2}{c^2}}}$$

$$m_v = \frac{m_0}{\sqrt{1 - \frac{v^2}{c^2}}}$$


---

## FORMULAE SHEET

$$\frac{F}{l} = k \frac{I_1 I_2}{d}$$

$$d = \frac{1}{p}$$

$$F = BIl \sin \theta$$

$$M = m - 5 \log \left( \frac{d}{10} \right)$$

$$\tau = Fd$$

$$\frac{I_A}{I_B} = 100^{(m_B - m_A)/5}$$

$$\tau = nBIA \cos \theta$$

$$m_1 + m_2 = \frac{4\pi^2 r^3}{GT^2}$$

$$\frac{V_p}{V_s} = \frac{n_p}{n_s}$$

$$F = qvB \sin \theta$$

$$\frac{1}{\lambda} = R \left( \frac{1}{n_f^2} - \frac{1}{n_i^2} \right)$$

$$E = \frac{V}{d}$$

$$\lambda = \frac{h}{mv}$$

$$E = hf$$

$$c = f\lambda$$

$$A_0 = \frac{V_{\text{out}}}{V_{\text{in}}}$$

$$Z = \rho v$$

$$\frac{V_{\text{out}}}{V_{\text{in}}} = - \frac{R_f}{R_i}$$

$$\frac{I_r}{I_0} = \frac{[Z_2 - Z_1]^2}{[Z_2 + Z_1]^2}$$

# PERIODIC TABLE OF THE ELEMENTS

KEY		Symbol of element		Name of element			
Atomic Number	79 Au 197.0 Gold	Symbol of element	Name of element	Atomic Number	79 Au 197.0 Gold		
Atomic Weight	197.0 Gold	Name of element	Atomic Number	79 Au 197.0 Gold	Atomic Weight		
1 H 1.008 Hydrogen	4 Be 9.012 Beryllium	5 B 10.81 Boron	6 C 12.01 Carbon	7 N 14.01 Nitrogen	8 O 16.00 Oxygen	9 F 19.00 Fluorine	10 Ne 20.18 Neon
3 Li 6.941 Lithium	12 Mg 24.31 Magnesium	13 Al 26.98 Aluminium	14 Si 28.09 Silicon	15 P 30.97 Phosphorus	16 S 32.07 Sulfur	17 Cl 35.45 Chlorine	18 Ar 39.95 Argon
11 Na 22.99 Sodium	20 Ca 40.08 Calcium	19 K 39.10 Potassium	21 Sc 44.96 Scandium	22 Ti 47.87 Titanium	23 V 50.94 Vanadium	24 Cr 52.00 Chromium	25 Mn 54.94 Manganese
37 Rb 85.47 Rubidium	38 Sr 87.62 Strontium	39 Y 88.91 Yttrium	40 Zr 91.22 Zirconium	41 Nb 92.91 Niobium	42 Mo 95.94 Molybdenum	43 Tc [97.91] Technetium	44 Ru 101.1 Ruthenium
55 Cs 132.9 Caesium	56 Ba 137.3 Barium	57-71 Lanthanoids	72 Hf 178.5 Hafnium	73 Ta 180.9 Tantalum	74 W 183.8 Tungsten	75 Re 186.2 Rhenium	76 Os 190.2 Osmium
87 Fr [223] Francium	88 Ra [226] Radium	89-103 Actinoids	104 Rf [261] Rutherfordium	105 Db [262] Dubnium	106 Sg [266] Seaborgium	107 Bh [264] Bohrium	108 Hs [277] Hassium
54 Xe 131.3 Xenon	53 I 126.9 Iodine	52 Te 127.6 Tellurium	51 Sb 121.8 Antimony	50 Sn 118.7 Tin	49 In 114.8 Indium	48 Cd 112.4 Cadmium	47 Ag 107.9 Silver
86 Rn [222.0] Radon	85 At [210.0] Astatine	84 Po [209.0] Polonium	83 Bi 209.0 Bismuth	82 Pb 207.2 Lead	81 Tl 204.4 Thallium	80 Hg 200.6 Mercury	79 Au 197.0 Gold

## Lanthanoids

57 La 138.9 Lanthanum	58 Ce 140.1 Cerium	59 Pr 140.9 Praseodymium	60 Nd 144.2 Neodymium	61 Pm [145] Promethium	62 Sm 150.4 Samarium	63 Eu 152.0 Europium	64 Gd 157.3 Gadolinium	65 Tb 158.9 Terbium	66 Dy 162.5 Dysprosium	67 Ho 164.9 Holmium	68 Er 167.3 Erbium	69 Tm 168.9 Thulium	70 Yb 173.0 Ytterbium	71 Lu 175.0 Lutetium
--------------------------------	-----------------------------	-----------------------------------	--------------------------------	---------------------------------	-------------------------------	-------------------------------	---------------------------------	------------------------------	---------------------------------	------------------------------	-----------------------------	------------------------------	--------------------------------	-------------------------------

## Actinoids

89 Ac [227] Actinium	90 Th 232.0 Thorium	91 Pa 231.0 Protactinium	92 U 238.0 Uranium	93 Np [237] Neptunium	94 Pu [244] Plutonium	95 Am [243] Americium	96 Cm [247] Curium	97 Bk [247] Berkelium	98 Cf [251] Californium	99 Es [252] Einsteinium	100 Fm [257] Fermium	101 Md [258] Mendelevium	102 No [259] Nobelium	103 Lr [262] Lawrencium
-------------------------------	------------------------------	-----------------------------------	-----------------------------	--------------------------------	--------------------------------	--------------------------------	-----------------------------	--------------------------------	----------------------------------	----------------------------------	-------------------------------	-----------------------------------	--------------------------------	----------------------------------

For elements that have no stable or long-lived nuclides, the mass number of the nuclide with the longest confirmed half-life is listed between square brackets.

The International Union of Pure and Applied Chemistry Periodic Table of the Elements (October 2005 version) is the principal source of data. Some data may have been modified.