

Australian History, Geography, Civics and Citizenship

2008 School Certificate Test

General Instructions

- Reading time: 10 minutes
- Working time: 2 hours
- Write using black or blue pen
- Attempt ALL questions
- Do NOT write in pencil
- Calculators may be used
- Write your Centre Number and Student Number at the top of pages 11, 13, 15, 17, 27, 29, 31 and 35

Total marks – 100

Section 1 — Australian History, Civics and Citizenship

Pages 3–18

50 marks

Allow about 1 hour for this section

This section has TWO parts

Part A – Questions 1–20 20 marks

Part B – Questions 21–24 30 marks

Section 2 — Australian Geography, Civics and Citizenship

Pages 19–37

50 marks

Allow about 1 hour for this section

This section has TWO parts

Part A – Questions 25–44 20 marks

Part B – Questions 45–48 30 marks

**Australian History, Geography,
Civics and Citizenship**

**Section 1 — Australian History,
Civics and Citizenship**

50 marks

Allow about 1 hour for this section

This section has TWO parts

Part A – Questions 1–20 20 marks

Part B – Questions 21–24 30 marks

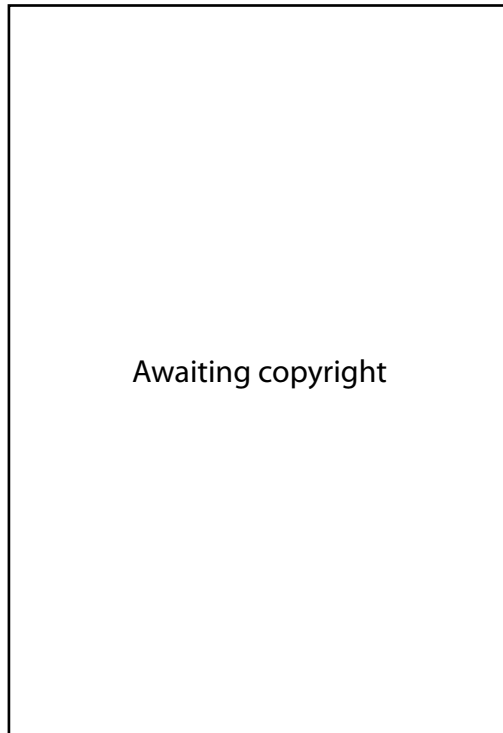
Part A

Questions 1–20 20 marks

Use the Australian History Part A Answer Sheet for Questions 1–20.

Questions 1–2 refer to Source A.

Source A



Campaign poster from the 1967 Referendum

- 1 What could a historian conclude about the 1967 Referendum from Source A?
 - (A) Political parties agreed on the issue.
 - (B) The referendum divided Australian society.
 - (C) The Liberal Party did not support the “Yes” vote.
 - (D) Aboriginal Australians did not support the referendum.

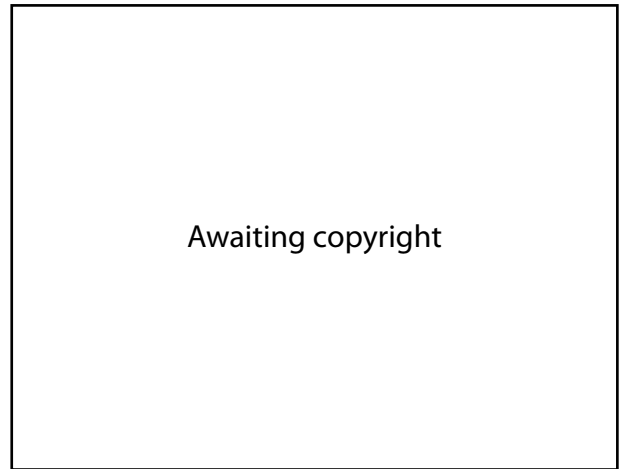
- 2 What was a result of the 1967 referendum for Aboriginal Australians?
 - (A) They were counted in the census.
 - (B) They were given the right to vote.
 - (C) Their land rights were acknowledged.
 - (D) They were given equal pay for equal work.

Questions 3–4 refer to Sources *B* and *C*.

Source *B*



Source *C*



Adapted from *ABS Australian Bureau of Statistics*

- 3 Which statement about Source *B* is true?
- (A) There were fewer cars registered in 1991 than in 1967.
 - (B) In 1991, over 10 million cars were registered in Australia.
 - (C) Car registration in 1979 was approximately double that of 1963.
 - (D) There was no change in numbers of cars registered between 1950 and 1955.
- 4 What could a historian conclude from Sources *B* and *C*?
- (A) Car and public transport usage followed similar patterns in the post war period.
 - (B) Between 1950 and 1975 the use of public transport declined as private car ownership increased.
 - (C) After 1980, increased petrol cost resulted in fewer registered cars and increased use of public transport.
 - (D) As the comfort and reliability of cars increased, the number of people using public transport decreased.

- 5 What was the main outcome of the Petrov Affair?
- (A) The Petrovs were deported.
 - (B) The Soviet Union admitted to spying.
 - (C) The Prime Minister lost the 1954 election.
 - (D) The Australian Labor Party split into two parties.
- 6 Which political group supported the referendum to ban the Communist Party?
- (A) The Australian Labor Party
 - (B) The Democratic Labor Party
 - (C) The Socialist Party of Australia
 - (D) The Liberal Country Party coalition
- 7 Why did the government introduce conscription in 1964?
- (A) To reduce the number of unemployed people
 - (B) To form part of the government's defence policy
 - (C) To reduce the number of soldiers dying in overseas conflicts
 - (D) To counter protests against involvement in overseas conflicts
- 8 Which of the following best describes a conscientious objector?
- (A) Someone who marches in a moratorium
 - (B) Someone who joins the army but objects to the war
 - (C) Someone who is too scared to fight for their country
 - (D) Someone who refuses military call-up on moral grounds
- 9 Why was the Native Title Act of 1993 important to Aboriginal people?
- (A) It meant that all Aborigines could own their own land.
 - (B) It gave Aborigines the right to vote and become citizens of Australia.
 - (C) It gave some Aborigines the right to ownership of land based on their traditions and customs.
 - (D) It legislated that Aboriginal people could claim land leased by pastoralists and miners.

Questions 10–11 refer to Source *D*.

Source *D*



Demonstrators outside Marrickville Army Depot, 1966

10 Consider the following statements about Source *D*.

Statement I The Save our Sons (SOS) movement opposed conscription.

Statement II All the demonstrators in the photograph opposed the Vietnam War.

- (A) Both statements are true.
- (B) Both statements are false.
- (C) Statement I is true and Statement II is false.
- (D) Statement I is false and Statement II is true.

11 Why would historians studying the Vietnam War find Source *D* useful?

- (A) It provides a range of views about the war.
- (B) It is a secondary source on the Vietnam War.
- (C) It shows the moratorium movement in action.
- (D) It shows that only young people opposed the war.

- 12 In which country did Australia serve as part of a United Nations force to combat the spread of communism?
- (A) Iraq
 - (B) Korea
 - (C) Vietnam
 - (D) East Timor
- 13 What is the chronological order of the events in Australia's response to the threat of communism?
- (A) The Vietnam War, the referendum to ban the Communist Party, the Korean War begins, the Petrov Affair
 - (B) The Petrov Affair, the Korean War begins, the Vietnam War, the referendum to ban the Communist Party
 - (C) The referendum to ban the Communist Party, the Petrov Affair, the Korean War begins, the Vietnam War
 - (D) The Korean War begins, the referendum to ban the Communist Party, the Petrov Affair, the Vietnam War
- 14 Why did Australia sign the ANZUS treaty?
- (A) To secure the assistance of member nations in the event of an attack
 - (B) To link Australia to Asian countries opposed to communist activity
 - (C) To declare the Communist Party of Australia an illegal organisation
 - (D) To provide aid to South East Asian countries in the form of technical assistance
- 15 Peacekeeping is a practical example of Australia's role in which organisation?
- (A) United Nations (UN)
 - (B) World Health Organisation (WHO)
 - (C) International Monetary Fund (IMF)
 - (D) United Nations Educational Scientific and Cultural Organisation (UNESCO)

Questions 16–17 refer to Source *E*.

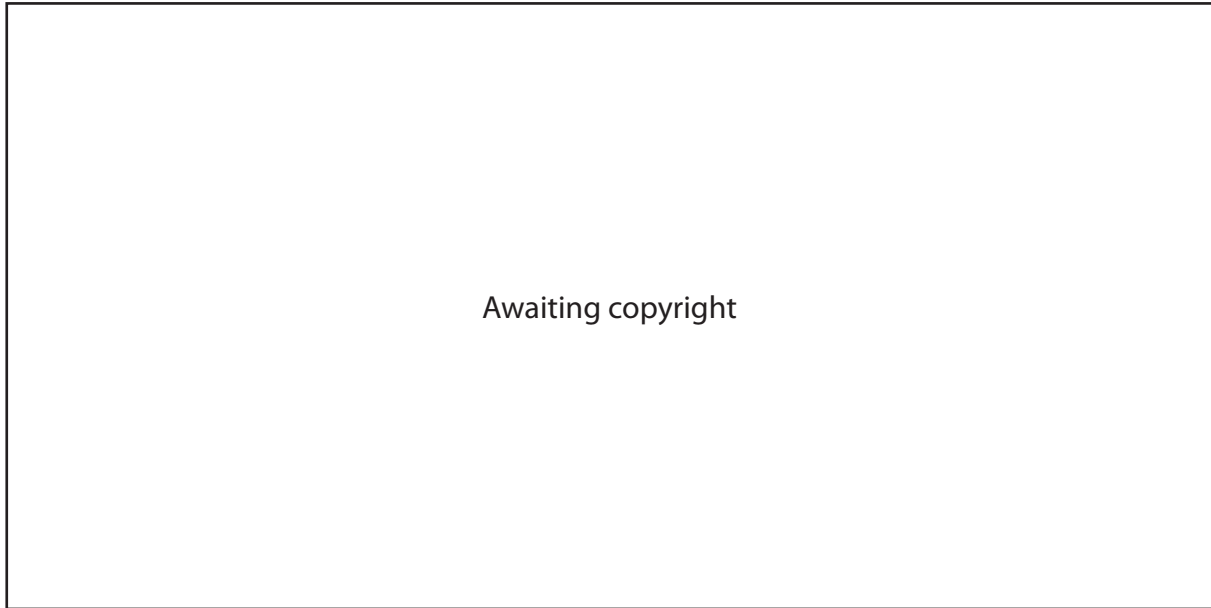
Source *E*



- 16 According to Source *E*, which statement best describes the peacekeeping operations in which Australians have been involved?
- (A) They have involved a wide variety of duties.
 - (B) They have resulted in a quick end to conflict.
 - (C) They usually enforce Australian laws and values.
 - (D) They have taken place mainly in the Middle East.
- 17 According to Source *E*, how have Australian peacekeepers helped countries move from conflict to peace?
- (A) By providing schools and hospitals
 - (B) By training local government officials
 - (C) By ensuring that fair elections are held
 - (D) By negotiating treaties between warring parties

Questions 18–19 refer to Source *F*.

Source *F*



- 18** According to Source *F*, why did Australia participate in the Vietnam War?
- (A) To prove loyalty to LBJ and the USA.
 - (B) To provide support for South Vietnam.
 - (C) To prevent the spread of communist influence.
 - (D) To stop the influence of the Soviet Union in Asia.
- 19** What can be concluded from Source *F* about Australia's relationship with the United States in 1966?
- (A) It was based on equality and mutual respect.
 - (B) The governments of both countries shared a common goal towards Vietnam.
 - (C) Harold Holt secured the support of the United States in the conflict in Vietnam.
 - (D) It was based mainly on the personal friendship between Prime Minister Holt and President Johnson.
- 20** Why would the Federal Government hold a referendum?
- (A) To create a political party
 - (B) To appoint the Governor-General
 - (C) To make changes to the Constitution
 - (D) To debate new legislation in parliament

BLANK PAGE

2008 School Certificate Test

**Australian History, Geography,
Civics and Citizenship**

--	--	--	--	--

Centre Number

--	--	--	--	--	--	--	--	--

Student Number

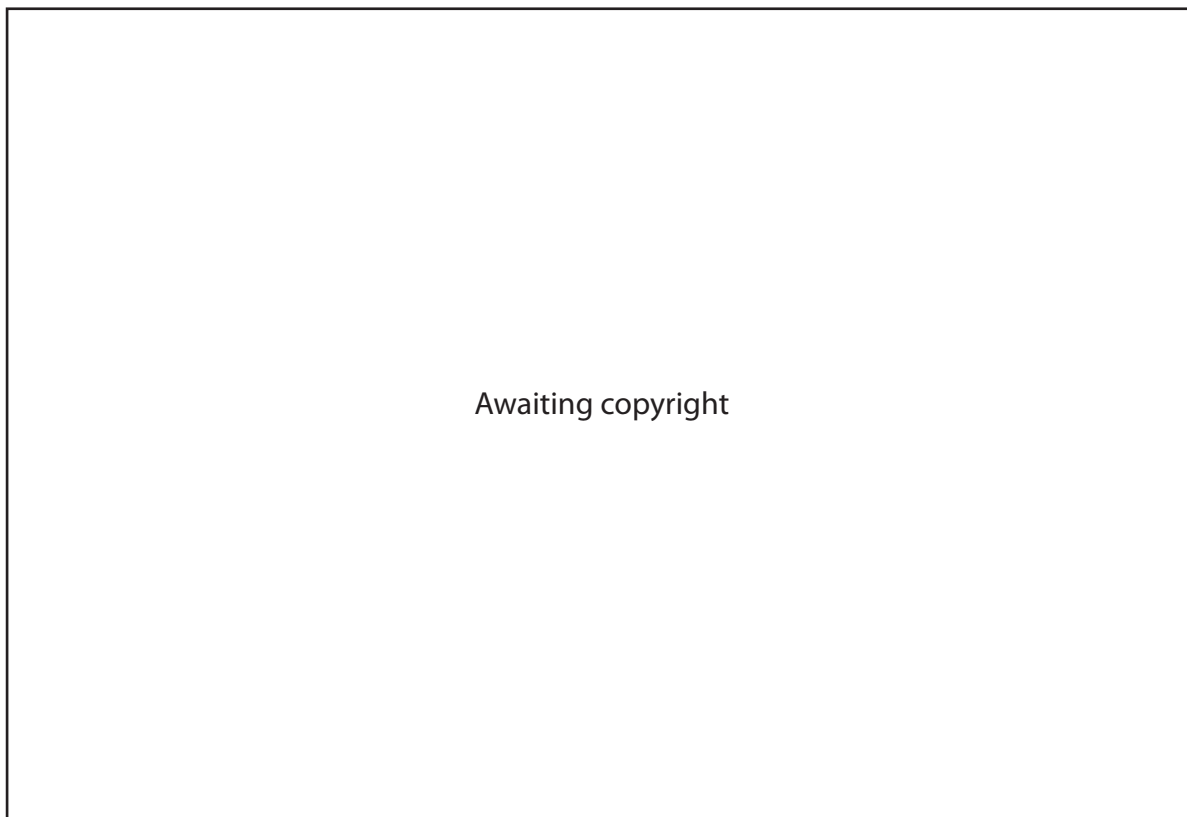
Section 1 – Part B (continued)

Question 22 (5 marks)

Please turn over

Question 22 refers to Source G.

Source G



Question 22 (5 marks)

Referring to Source G and your own knowledge, outline why there was support for Australia's involvement in the Vietnam War.

.....

.....

.....

.....

.....

.....

.....

.....

.....

.....

.....

.....

.....

.....

.....

.....

.....

.....

.....

.....

.....

.....

**Australian History, Geography,
Civics and Citizenship**

--	--	--	--	--

Centre Number

--	--	--	--	--	--	--	--	--

Student Number

Section 1 – Part B (continued)

Question 23 (5 marks)

Select a Prime Minister from the box below.

Describe ONE contribution of this Prime Minister to Australia’s development.

Ben Chifley	Gough Whitlam
Robert Menzies	Malcolm Fraser
Harold Holt	Bob Hawke
John Gorton	Paul Keating
William “Billy” McMahon	John Howard

Prime Minister

.....

.....

.....

.....

.....

.....

.....

.....

.....

.....

.....

.....

.....

.....

.....

.....

.....

.....

.....

.....

.....

.....

.....

BLANK PAGE

2008 School Certificate Test
**Australian History, Geography,
Civics and Citizenship**

--	--	--	--	--

Centre Number

--	--	--	--	--	--	--	--	--

Student Number

Section 1 – Part B (continued)

In your answer you will be assessed on your ability to:

- organise and communicate your knowledge and understanding effectively
 - support your ideas with relevant evidence
 - use historical terms appropriately
-

Question 24 (15 marks)

The rights and freedoms of Aboriginal people, migrants and women have changed during the 20th century.

For ONE of these groups describe a change. What caused the change? What were the effects of the change?

Chosen group

.....

.....

.....

.....

.....

.....

.....

.....

.....

.....

.....

Question 24 continues on page 18

**Australian History, Geography,
Civics and Citizenship**

**Section 2 — Australian Geography,
Civics and Citizenship**

50 marks

Allow about 1 hour for this section

This section has TWO parts

Part A – Questions 25–44 20 marks

Part B – Questions 45–48 30 marks

Part A

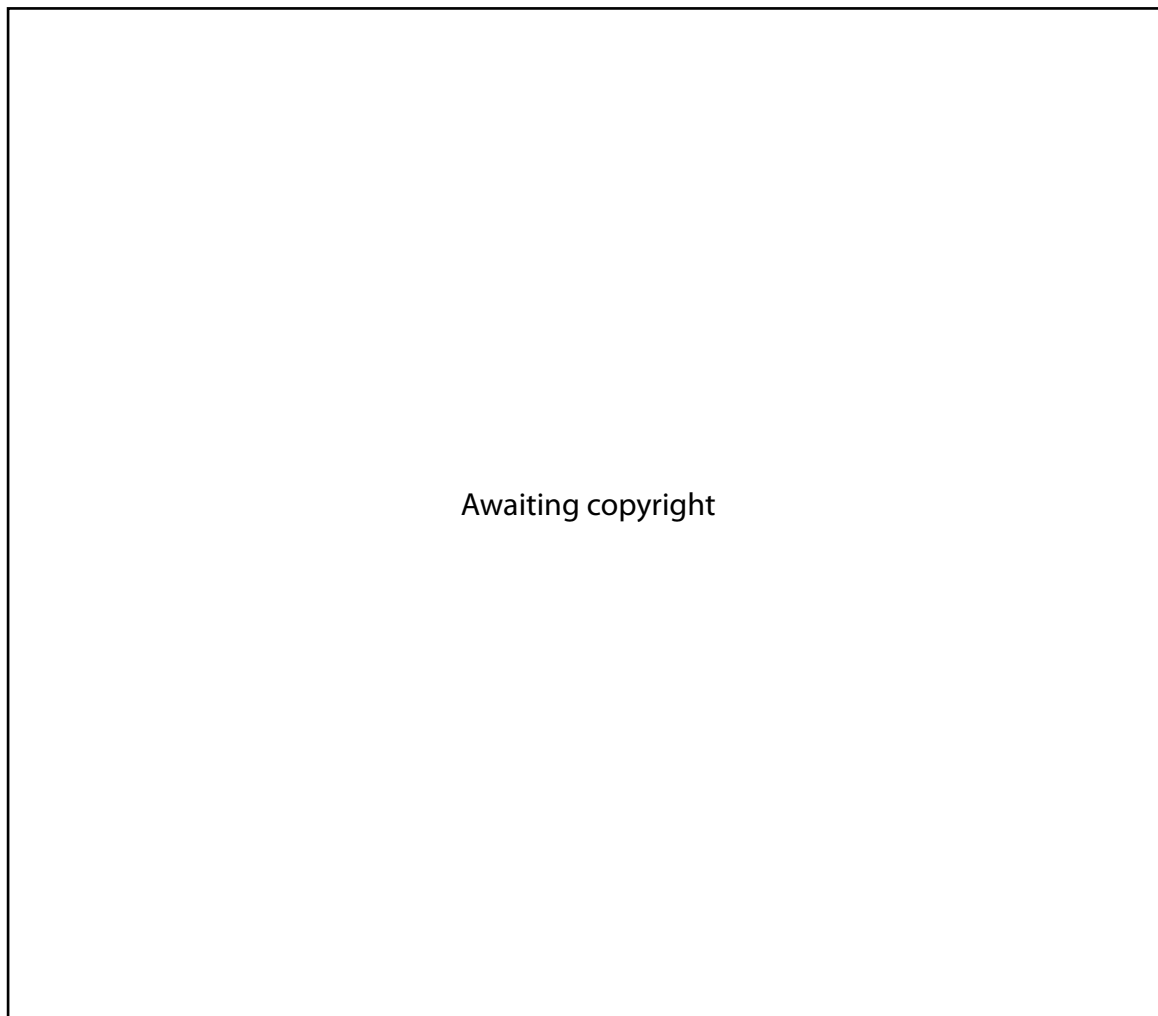
Questions 25–44 20 marks

Use the Australian Geography Part A Answer Sheet for Questions 25–44.

- 25 Which group of countries is in the Asia-Pacific region?
- (A) Brazil, India, Fiji
 - (B) Vietnam, Singapore, Norway
 - (C) The United Kingdom, Malaysia, East Timor
 - (D) Indonesia, New Zealand, Papua New Guinea
- 26 Which geographical instrument is used by a geographer in the field to determine direction?
- (A) Ruler
 - (B) Compass
 - (C) Barometer
 - (D) Clinometer
- 27 In a geography field study what is a secondary source of data?
- (A) Traffic count
 - (B) Water quality test
 - (C) Interview with local landholder
 - (D) Photographs from a local newspaper
- 28 Which term refers to the beliefs, attitudes and traditions of a community?
- (A) Society
 - (B) Culture
 - (C) Citizenship
 - (D) Nation-state

Questions 29–30 refer to Source A.

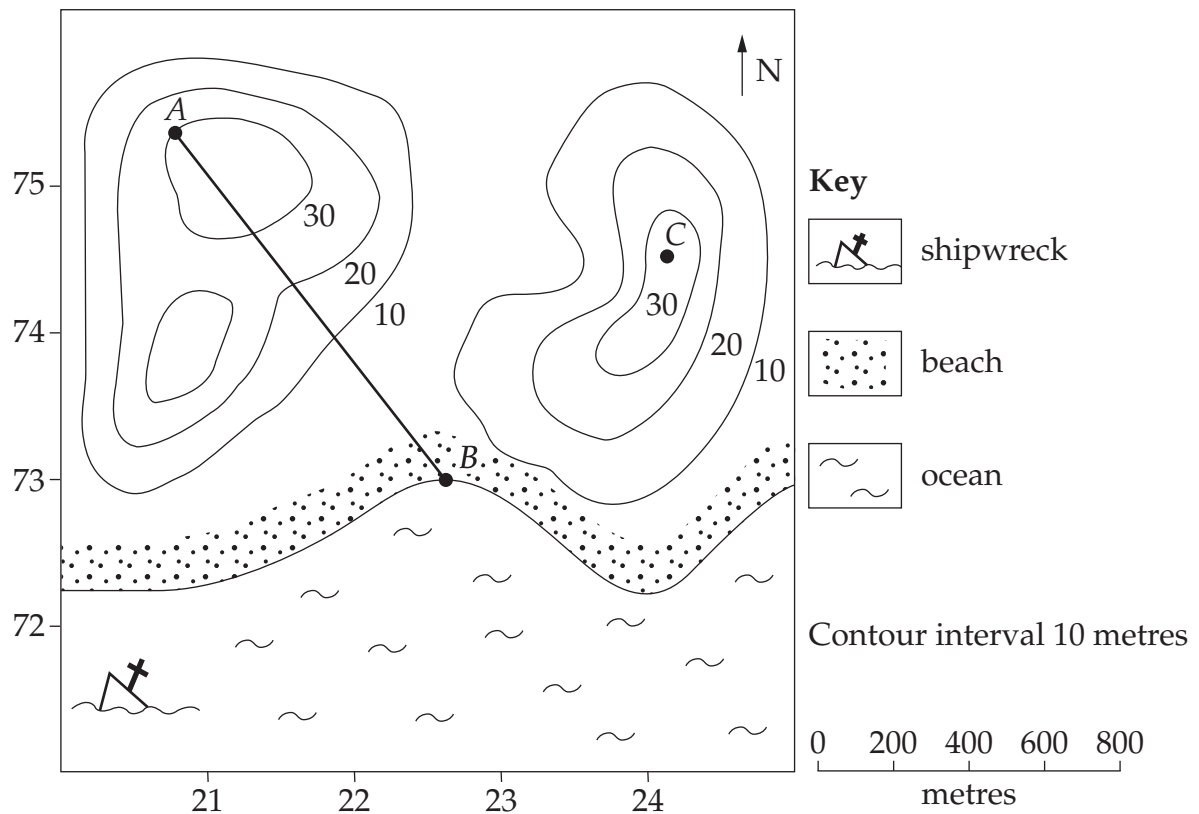
Source A



- 29** What is a service provided by smartraveller.gov.au?
- (A) Flight details
 - (B) Travel advice
 - (C) Tour bookings
 - (D) Student exchanges
- 30** Why is Source A considered an accurate source of information for Australian travellers?
- (A) It has a 24-hour help line.
 - (B) It has a subscription service.
 - (C) It is downloaded from the internet.
 - (D) It is a government advisory service.

Questions 31–34 refer to Source B.

Source B



31 What is the area reference for the shipwreck?

- (A) 2071
- (B) 2171
- (C) 7120
- (D) 7221

32 What is the bearing of the shipwreck from Point C?

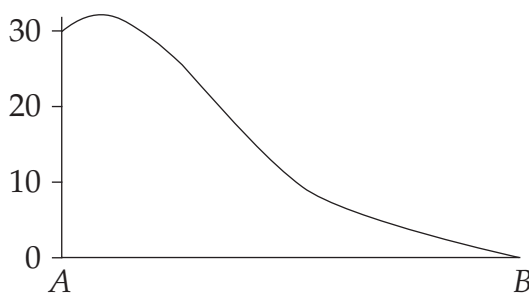
- (A) 30°
- (B) 130°
- (C) 230°
- (D) 330°

33 What is the gradient of the slope between points *A* and *B*?

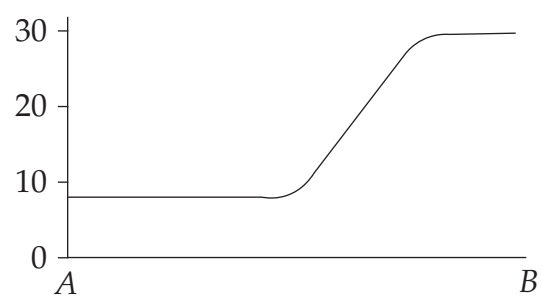
- (A) 1 : 10
- (B) 1 : 20
- (C) 1 : 30
- (D) 1 : 40

34 Which of the following represents the cross-section from Point *A* to Point *B*?

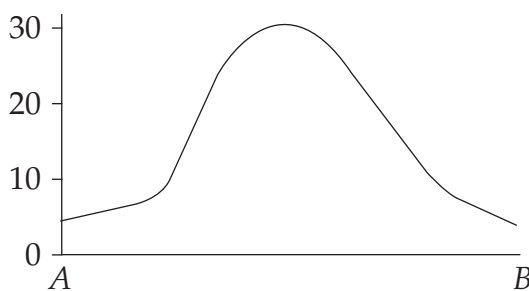
(A)



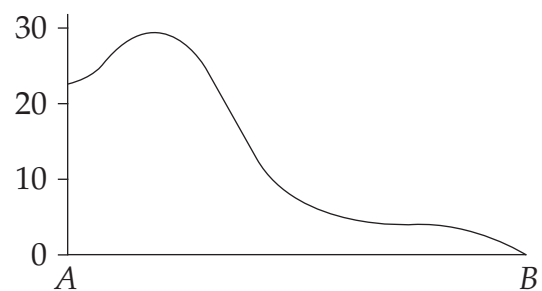
(B)



(C)



(D)



35 Which organisation is involved with regional agreements between Australia and its neighbours?

- (A) The United Nations (UN)
- (B) World Trade Organisation (WTO)
- (C) Asia Pacific Economic Cooperation (APEC)
- (D) Organisation of Economic Cooperation and Development (OECD)

36 A company is proposing to establish a mine near an Australian country town.

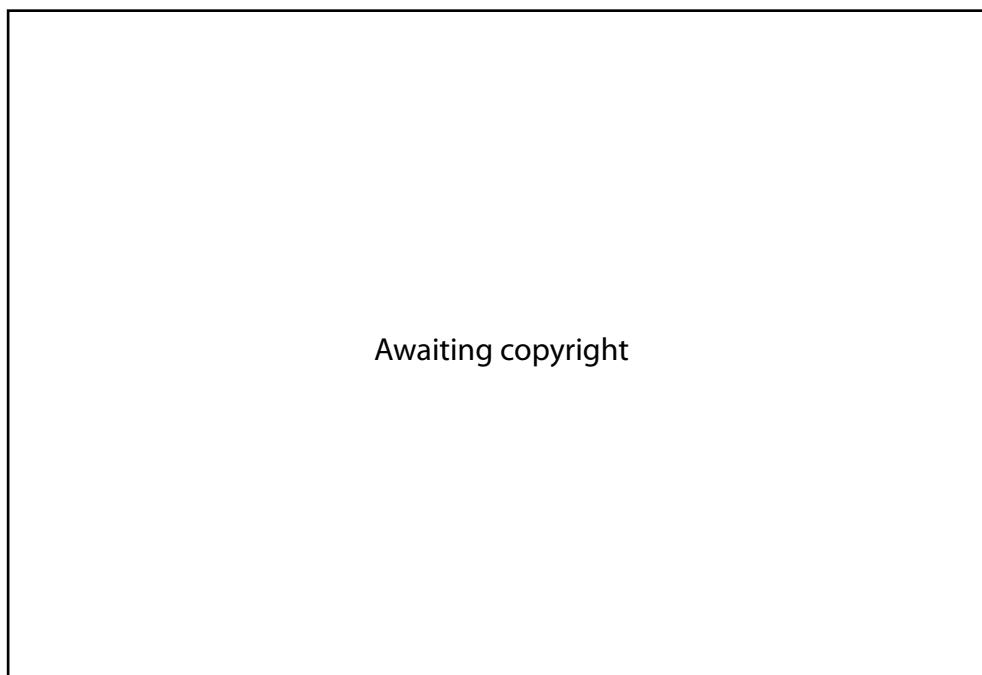
Which would be the most effective action local citizens could take to show the government their opposition to the mine?

- (A) Go on strike
- (B) Organise a petition
- (C) Move away from the area
- (D) Fund environmental projects

37 What is an example of a regional link for Australia in the Asia-Pacific region?

- (A) Hosting the Olympic Games
- (B) Involvement in a peacekeeping force in Europe
- (C) The Australia New Zealand Free Trade Agreement
- (D) A treaty between Australia and the United Kingdom

38 Which global link does the cartoon illustrate?



- (A) Aid
- (B) Sport
- (C) Trade
- (D) Communication

- 39 Which term best describes the processes through which individuals and groups participate in decision-making about government, rights and values?
- (A) Democratic
 - (B) Economic
 - (C) Geographical
 - (D) Social
- 40 Fieldwork activities should be carefully planned and carried out.
Which set of steps is a logical order for a Research Action Plan?
- (A) Identify aim, collect data, propose action
 - (B) Propose actions, analyse data, present findings
 - (C) Collect data, identify aim, generate focus questions
 - (D) Analyse data, generate focus question, present findings
- 41 Which two groups are most likely to have opposing views on the issue of urban growth and decline?
- (A) School communities and public libraries
 - (B) Aged care providers and medical centres
 - (C) Real estate agents and home building companies
 - (D) Property developers and community environment groups
- 42 What is the most likely way the Federal government would respond to concerns about Australia's ageing population?
- (A) Encouraging early retirement
 - (B) Limiting migration to Australia
 - (C) Reducing the number of beds in hospitals
 - (D) Offering incentives to couples to have children

Questions 43–44 refer to Source C.

Source C



43 How many males in Town *A* are aged under 15 years?

- (A) 22 000
- (B) 18 000
- (C) 15 500
- (D) 13 500

44 What is the approximate difference between Town *A* and Town *B* in the number of people in the 55–59 age group?

- (A) 2000
- (B) 4000
- (C) 6000
- (D) 8000

2008 School Certificate Test

**Australian History, Geography,
Civics and Citizenship**

--	--	--	--	--

Centre Number

--	--	--	--	--	--	--	--	--

Student Number

Section 2 (continued)

Part B

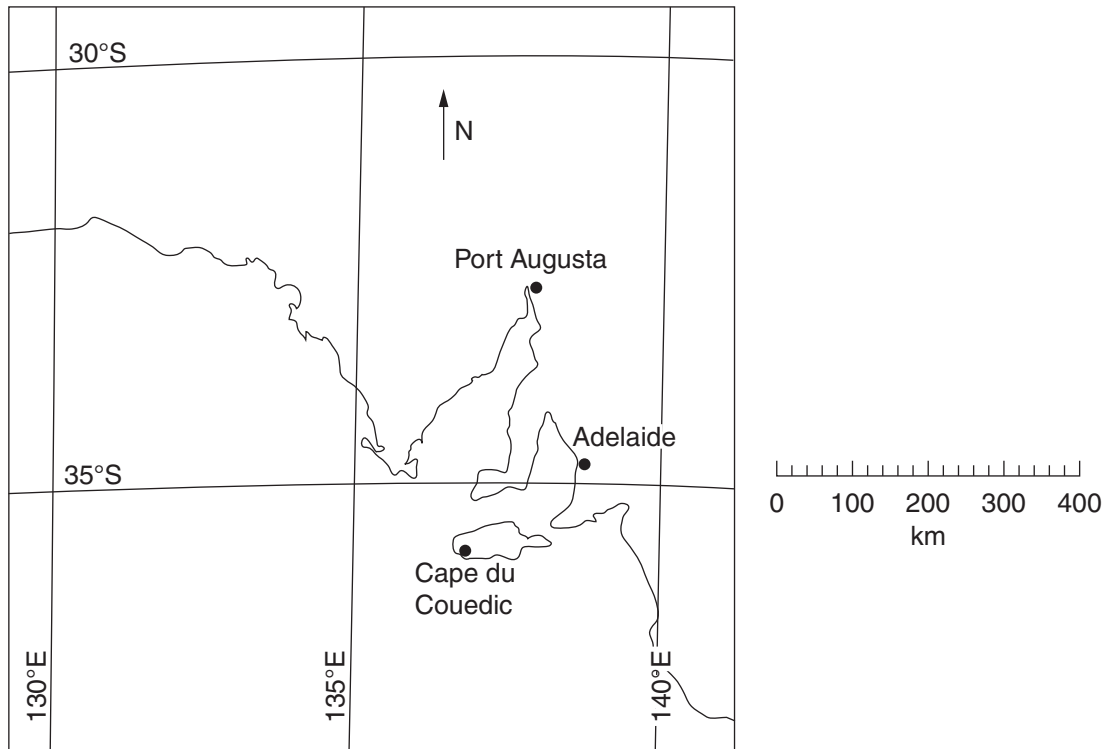
Questions 45–48 30 marks

Answer the questions in the spaces provided.

Question 45 (4 marks)

Please turn over

Question 45 (4 marks)



- (a) What is the approximate latitude and longitude (in degrees) of Port Augusta? 2
- latitude
- longitude
- (b) What is the approximate line distance between Port Augusta and Cape du Couedic? 1
- km
- (c) Using a 16 point compass, state the direction of Adelaide from Port Augusta. 1
-

**Australian History, Geography,
Civics and Citizenship**

--	--	--	--	--

Centre Number

--	--	--	--	--	--	--	--	--

Student Number

Section 2 – Part B (continued)

Question 46 (5 marks)

- | |
|---|
| <ul style="list-style-type: none">• Aid• Migration• Defence• Trade |
|---|

Choose ONE of Australia’s regional and global links from the box above.

Link:

Outline the role of government in relation to the link you have chosen.

.....

.....

.....

.....

.....

.....

.....

.....

.....

.....

.....

.....

.....

.....

.....

.....

.....

.....

.....

.....

BLANK PAGE

2008 School Certificate Test

**Australian History, Geography,
Civics and Citizenship**

--	--	--	--	--

Centre Number

--	--	--	--	--	--	--	--	--

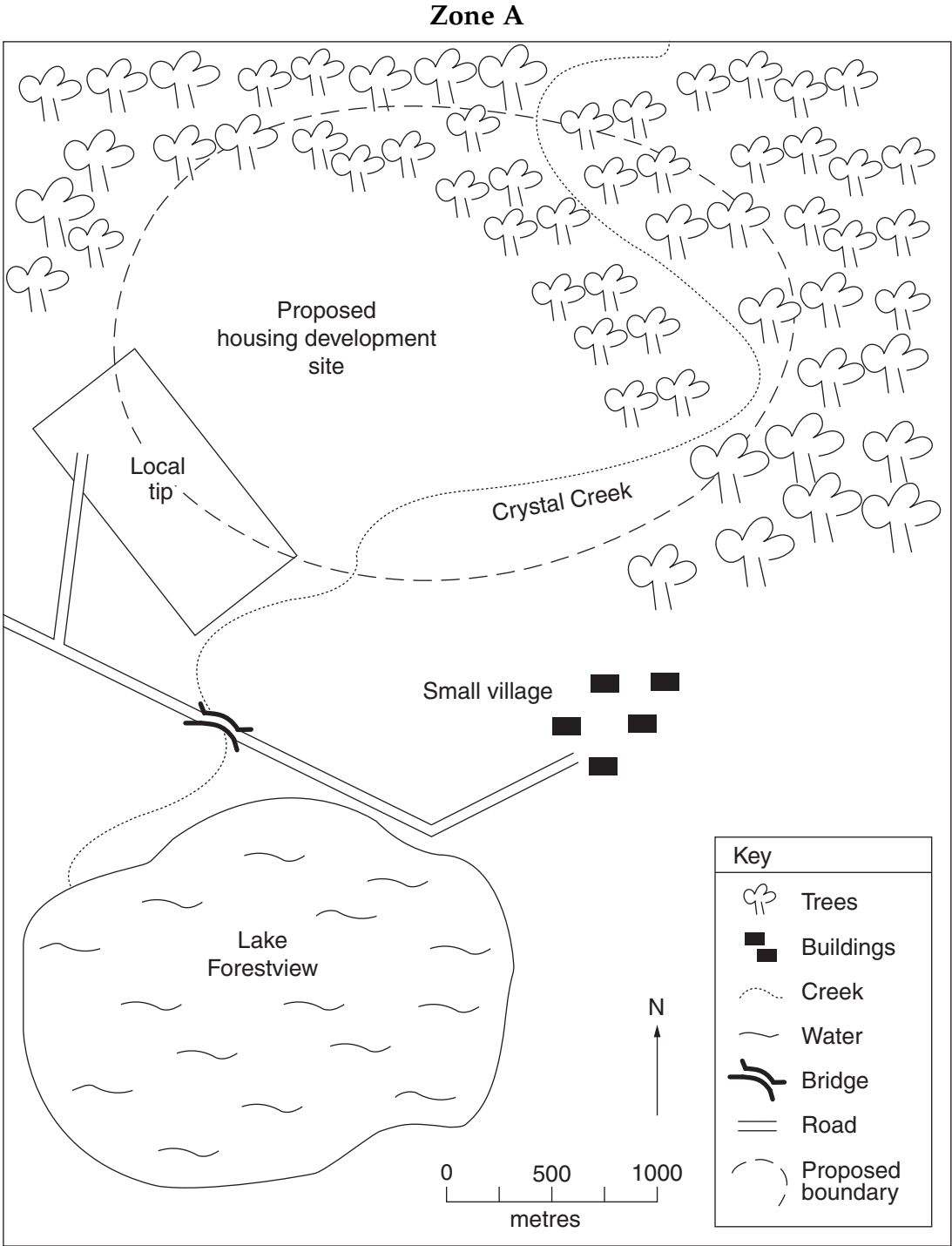
Student Number

Section 2 – Part B (continued)

Question 47 (6 marks)

Please turn over

Question 47 (6 marks)



A developer has proposed a new housing development for **Zone A** based on future population growth.

Question 47 continues on page 33

BLANK PAGE

**Australian History, Geography,
Civics and Citizenship**

--	--	--	--	--

Centre Number

--	--	--	--	--	--	--	--	--

Student Number

Section 2 – Part B (continued)

In your answer you will be assessed on your ability to:

- organise and communicate your knowledge and understanding effectively
 - support your ideas with relevant examples
 - use geographical terms appropriately
-

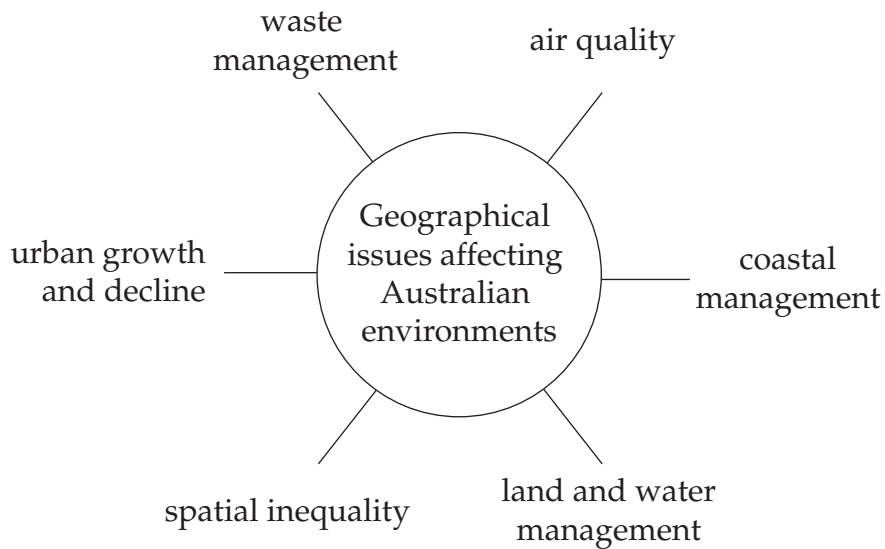
Question 48 (15 marks)

Please turn over

In your answer you will be assessed on your ability to:

- organise and communicate your knowledge and understanding effectively
 - support your ideas with relevant examples
 - use geographical terms appropriately
-

Question 48 (15 marks)



Choose ONE geographical issue affecting Australian environments from those shown above.

Explain how the chosen geographical issue is managed.

Chosen issue:

.....

.....

.....

.....

.....

.....

.....

.....

.....

.....

Question 48 continues on page 37

BLANK PAGE