

MAJOR

TEXTILE

PROJECT

• Title Page / s not
included in marks

- Lists a few historical / contemporary factors
- No relationship to final design

History

The historical aspects include features from the early 1900's. Which was the Edwardian time were dresses especially evening wear were of a simple line. Soft fabrics were used with no waist and a "Baby Doll" feature of the skirt coming from under the bust. Fabrics were combined often sheer fabrics placed over heavy fabrics.

Contemporary Factors: The dress has been modernized by removing the sleeves and using synthetic fabrics.



- No reference to creative and / or innovative design

- Limited communication techniques



Sunsilky Lining-
Is used for the lining.

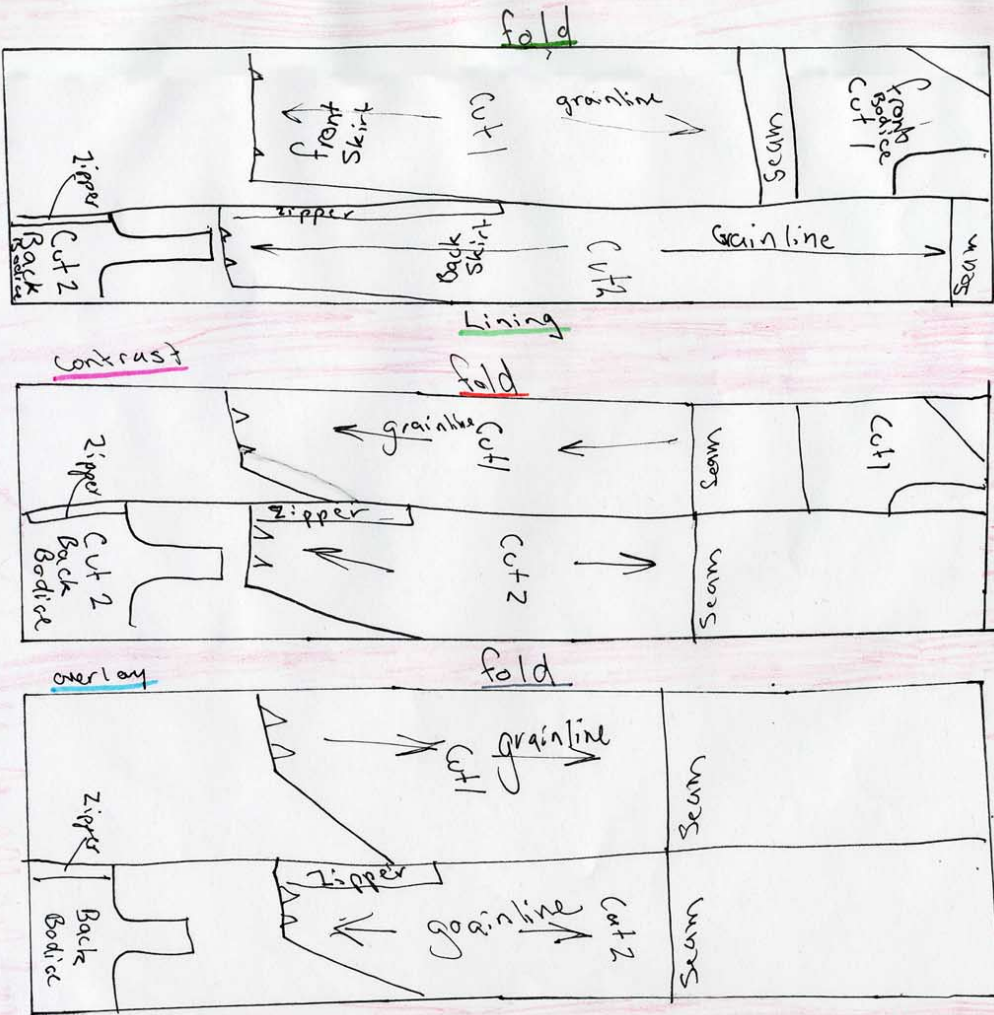


Sabine Georgette-
Is used for the overlay.



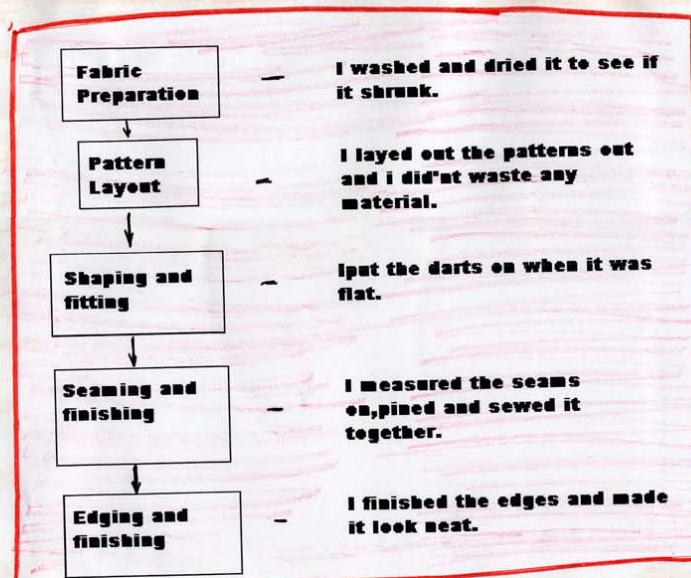
Satin Crepe-
Is used for the underlay.

- Technical production plans of limited standard and not to scale



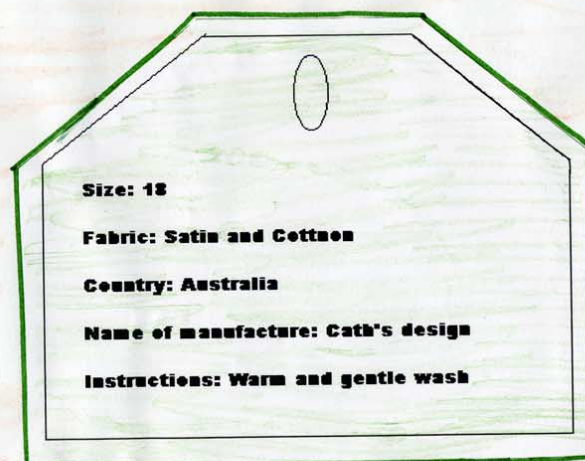
- Adequate costing details

<u>Costings:</u>		
<i>Satin Crepe:</i>	1.9 at \$15.99	= \$30.38
<i>Sabine Georgette:</i>	2.7 at \$13.99	= \$37.77
<i>Sunsilky lining:</i>	2.7 at \$7.68	= \$20.73
<i>Guttermann Thread:</i>	2 at \$2.69	= \$5.38
<i>Sequins:</i>	4m at \$1.20	= \$4.80
<i>Dress zipper:</i>		= \$1.29
<i>Buttrick Pattern:</i>		= \$13.95
<i>TOTAL:</i>		= \$114.30



- Minimal description of construction process

- Care Label incomplete



- Provides no evidence of experimentation or investigation
- Samples of final techniques used

Manufacturing Process.

Open seam

Seam

Hem

Sequins

Sequins

